



North Kemang Huis

TOWNHOUSE

COMFORTABLE LIVING

Refining Life Through Comfortable Living

Welcome to North Kemang Huis, where home is naturally lavish and relaxing. Our brand new residence are nestled in the heart of South Jakarta, offering a serene and lush living experience in the middle of dynamic city life.



Embrace Comfort and Tranquility Within Urban Oasis at Kemang



Jalan Kemang Utara



Location Map

- Direct dual access
- Main road
- Toll road

Strategicly Located for Effortless Lifestyle

DIRECT dual access through Kemang Raya & Mampang Prapatan

1km

Kemang Village

4km

Kuningan

5km

SCBD
Senopati



Retails

4 mins to Ranch Market Kemang

6 mins to Kem Chick

15 mins to ASHTA District 8



Education

10 mins to ACG School

10 mins to Sekolah Pelita Harapan



Hospitals

5 mins to Siloam Hospitals Mampang



Gas Station

3 mins to Shell Kemang Raya



Entertainment

3 mins to McDonald's Kemang

5 mins to Como Park



Exercise Center

3 mins to F45 Training Kemang

4 mins to Tennis & Squash Club 25



A Vision of Comfortable Living





Master Bedroom 1

Double Master Bedrooms

Prepare to be captivated by the seamless integration of luxury and comfort. The double master bedroom concept goes beyond aesthetics, from well-appointed en-suite bathrooms to meticulously designed walk-in closets, every element has been purposefully crafted to enhance your lifestyle. Unwind in your personal haven with ample space to relax, rejuvenate and enjoy the comfortable living.



Master Bedroom 2



Living room, dining & kitchen



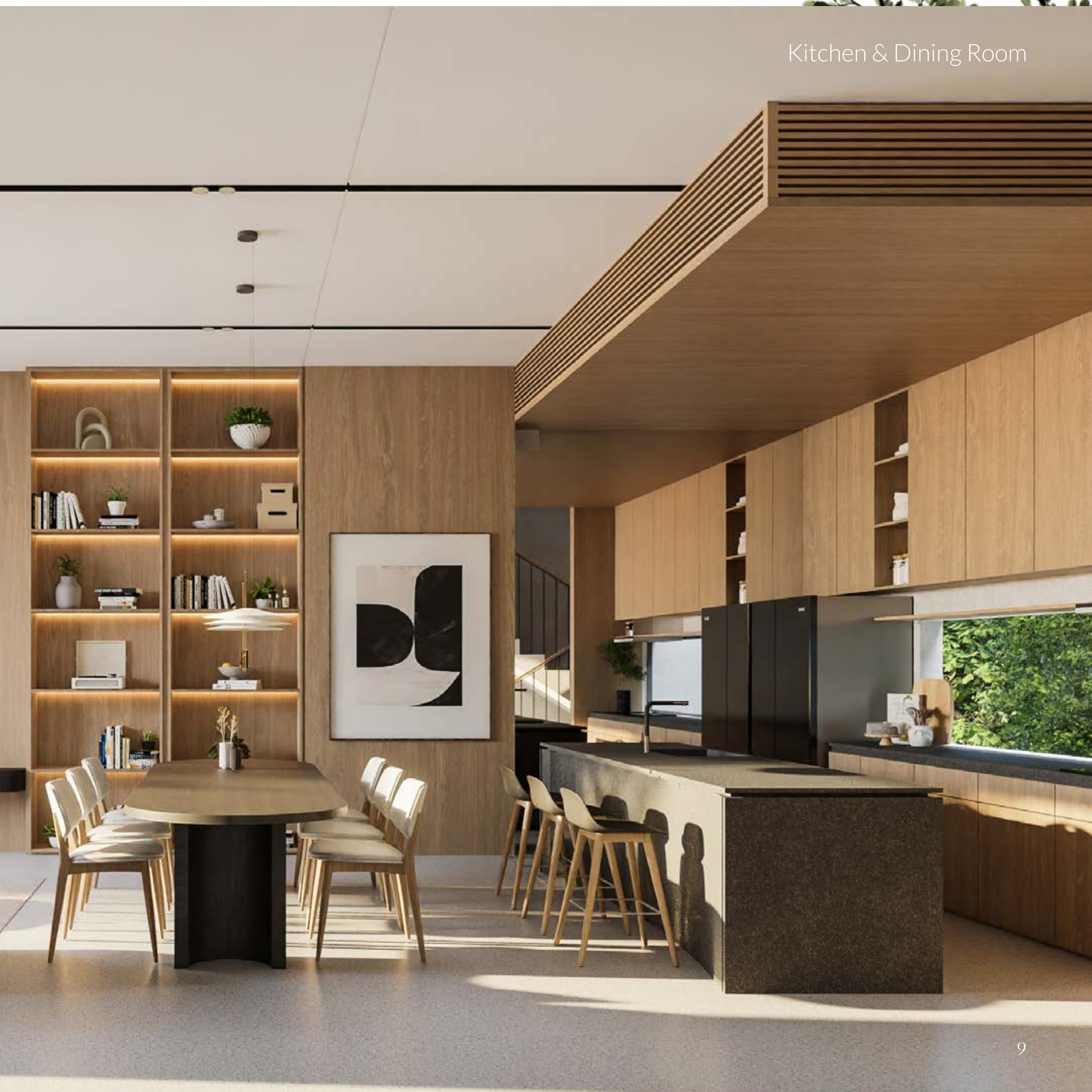
Experience the
Comfortable Living
With Living, Dining
& Lush Balcony
in One Harmony



Living Room



Kitchen & Dining Room





Master Bathroom 1



Rooftop Lounge

Ascend to your exclusive rooftop lounge to indulge in a state of tranquility and comfortable living amidst the bustling energy of the city. Let us transport you to a serene escape, where beautiful architecture and panoramic vistas intertwine.



The Development Concept

Each level of North Kemang Huis unit has been carefully crafted to enhance your daily routines, making your life more efficient and comfortable.

Floor to floor height:

5,5m

Rooftop

- Rooftop Lounge
- Maid room + Bathroom
- Storage

3,5m

Level 3

- Master Bedroom 1
- En-Suite Master Bathroom 1
- Bedroom 3
- En-Suite Bathroom 3

4,1m

Level 2

- Living Room
- Dining Room
- Kitchen
- Powder Room
- Private Garden Terrace

3,5m

Level 1

- Master Bedroom 2
- En-suite Master Bathroom 2
- Foyer lobby
- Study area
- 2 Car Park





Unwind Within the Ultimate Comfort

North Kemang Huis offers a range of facilities that are designed to provide residents with the exceptional comfortable living experience.

- 24 hours Secured One Gate System
- Rooftop Lounge
- Serenity Garden
- CCTV

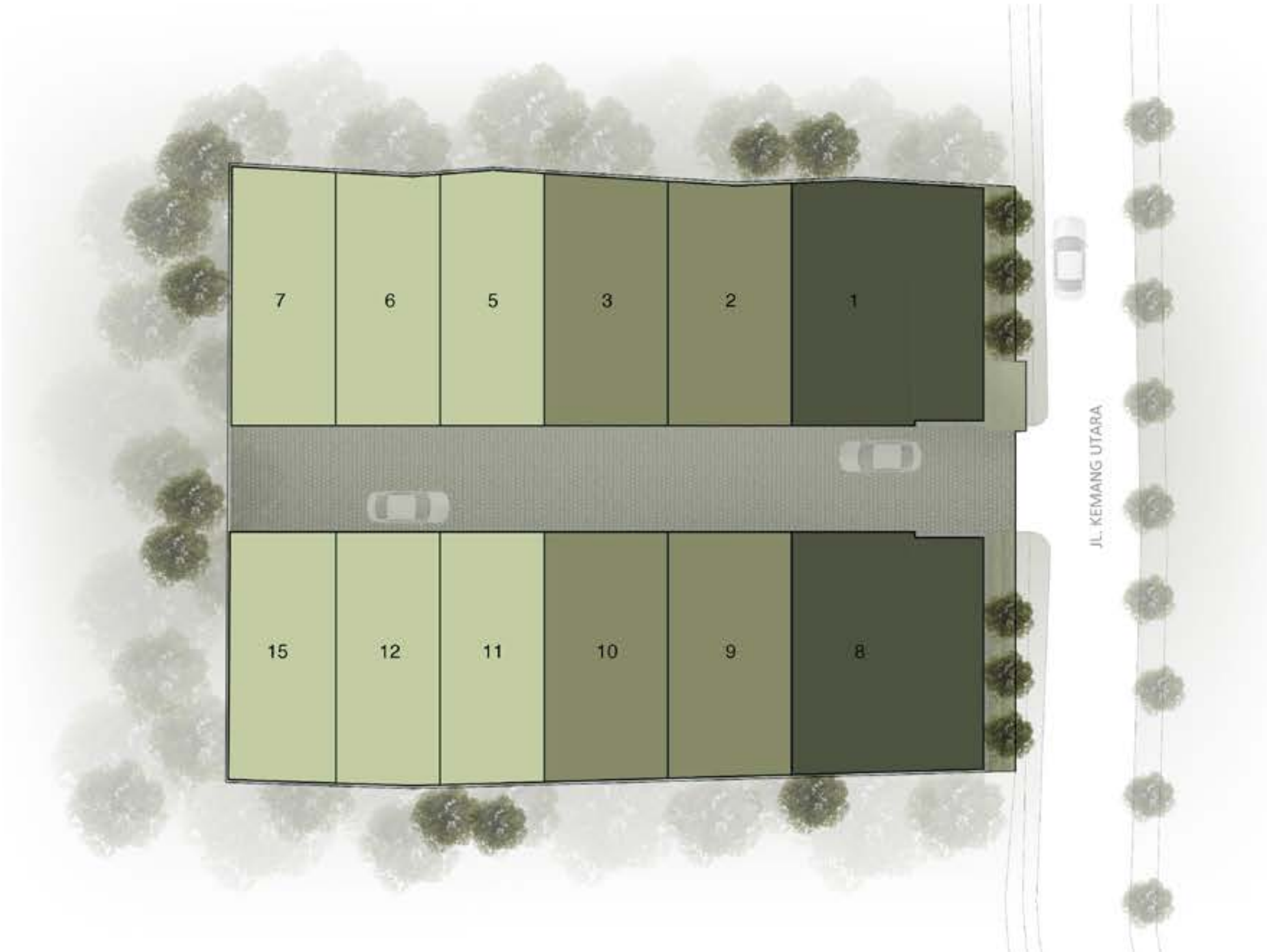


Unit Floor Plan

Type 6 | Type 7 | Type 7 Garden



Site Plan



Type 6

UNIT NO. 5 & 12
Land Size: 91 m²
Building Size: 265 m²

UNIT NO. 6 & 11
Land Size: 90 m²
Building Size: 265 m²

UNIT NO. 7 & 15
Land Size: 92 m²
Building Size: 265 m²



N



1st Floor



2nd Floor



3rd Floor



Rooftop



3 Bedrooms
(include 2 master bedrooms)



3 En-suite
Bathrooms



1 Rooftop
Lounge



1 Powder
Room



1 Private
Garden Terrace



1 Maid
Room +
Bathroom



1 Living Room



1 Foyer Lobby



1 Study Area



1 Storage



1 Kitchen

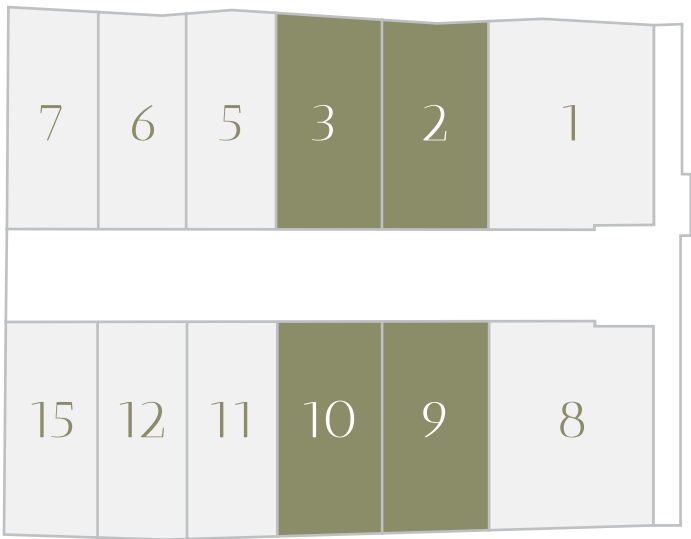
Type 7

UNIT NO. 2 & 9
Land Size: 105 m²
Building Size: 317 m²

UNIT NO. 3 & 10
Land Size: 106 m²
Building Size: 317 m²



N



1st Floor



2nd Floor



3rd Floor



Rooftop



3 Bedrooms
(include 2 master
bedrooms)



3 En-suite
Bathrooms



1 Rooftop
Lounge



1 Powder
Room



1 Private
Garden Terrace



1 Maid
Room +
Bathroom



1 Living Room



1 Foyer Lobby



1 Study Area



1 Storage

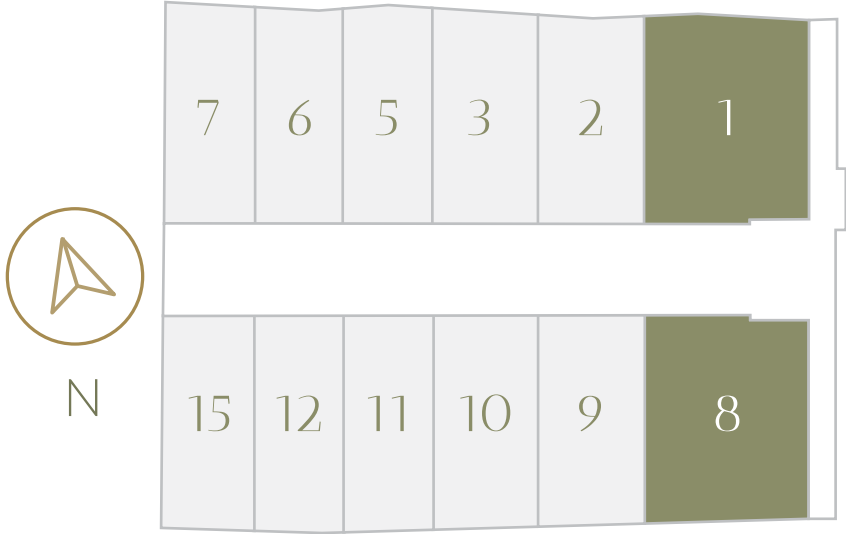


1 Kitchen

Type 7 Garden

UNIT NO. 1
Land Size: 168 m²
Building Size: 323 m²

UNIT NO. 8
Land Size: 165 m²
Building Size: 323 m²



1st Floor



2nd Floor



3rd Floor



Rooftop



3 Bedrooms
(include 2 master bedrooms)



3 En-suite Bathrooms



1 Rooftop Lounge



1 Powder Room



1 Private Garden Terrace



1 Maid Room + Bathroom



2 Living Rooms



1 Foyer Lobby



1 Study Area



1 Storage



1 Kitchen



Garden
(convertible to pool or kids playground)



Specification

Foundation

Reinforced Structure & River Stone

Structure

Reinforced Concrete

Roof

Steel Structure

Floor

- Foyer, Study, Living, Kitchen & Dining Room:
Homogenous Tile 1000 x 1000 mm
- Master Bedroom 1 & 2; Bedroom 3:
Laminated Parquette
- Master bathroom 1,2&3:
Homogenous Tile 600 x 1200 mm
- Balcony :
Natural Stone with Synthetic Grass
- Rooftop :
Natural Stone

Walls

- Foyer, Master Bedroom 1 & 2, Bedroom 3, Study, Living, Kitchen, & Dining Room:
Cement Plester with emulsion paint
- Balcony:
Cement Plester with Exterior Paint
- Master Bathroom 1 ,2, 3:
Homogenoues Tile 300 x 1200 mm
- Rooftop:
Wood Plastic Composite Panel

Ceiling

- Interiors:
Gypsum Board with emulsion paint
- Balcony:
GRC or Gypsum Board
- Rooftop:
Wood Plastic Composite Panel

Sanitary

Grohe or Kohler Closet at master bathroom
Wastafel
Shower

Water insallation

Cold & Hot (shower & kitchen)

Doors

HPL Laminated Door

Main Door

Solid Engineered Wood

Windows

Glass with alumunium frames

Additional items

Cable TV
Cable Internet data
Power supply 220V / 7700VA

Disclaimer: Neither the Developer nor its agents will be held responsible for any inaccuracies or omissions in the information contained in this brochure. The Developer does not accept responsibility for any errors or omissions or for any losses suffered by any person or legal entity resulting from the use of the information contained in this brochure, however caused. The statements, visual representations, models, show units, displays and illustrations, photographs, art renderings and other graphic representations and references are intended to portray only artistic impressions of the development and décor and cannot be regarded as accurate or representations of fact. All areas and other measurements are approximate measurements and are subject to change and final survey. All plans and model are not to scale unless expressly stated and are subject to amendment. All information, specifications, renderings, visual representations, measurements and plans are subject to change as may be required by us and/or the relevant authorities. The Conditional Sale and Purchase Agreement (CSPA, also known as a PPJB) shall form the entire agreement between the Developer and the Purchaser and shall supersede all statements, representations or promises made prior to the signing of the CSPA and shall in no way be modified by any statements, representations or promises made by us or our agents which are not embodied in the CSPA, whether before or after the signing of the CSPA. Any explanation concerning the CSPA and the development is for information purposes only and it is recommended that potential Purchasers seek independent legal advice with regard to the proposed purchase. Furniture, kitchen island, kitchen equipment and lighting point and design in renderings are part of interior design by buyer and not provided by developer.

Brochure April 2024



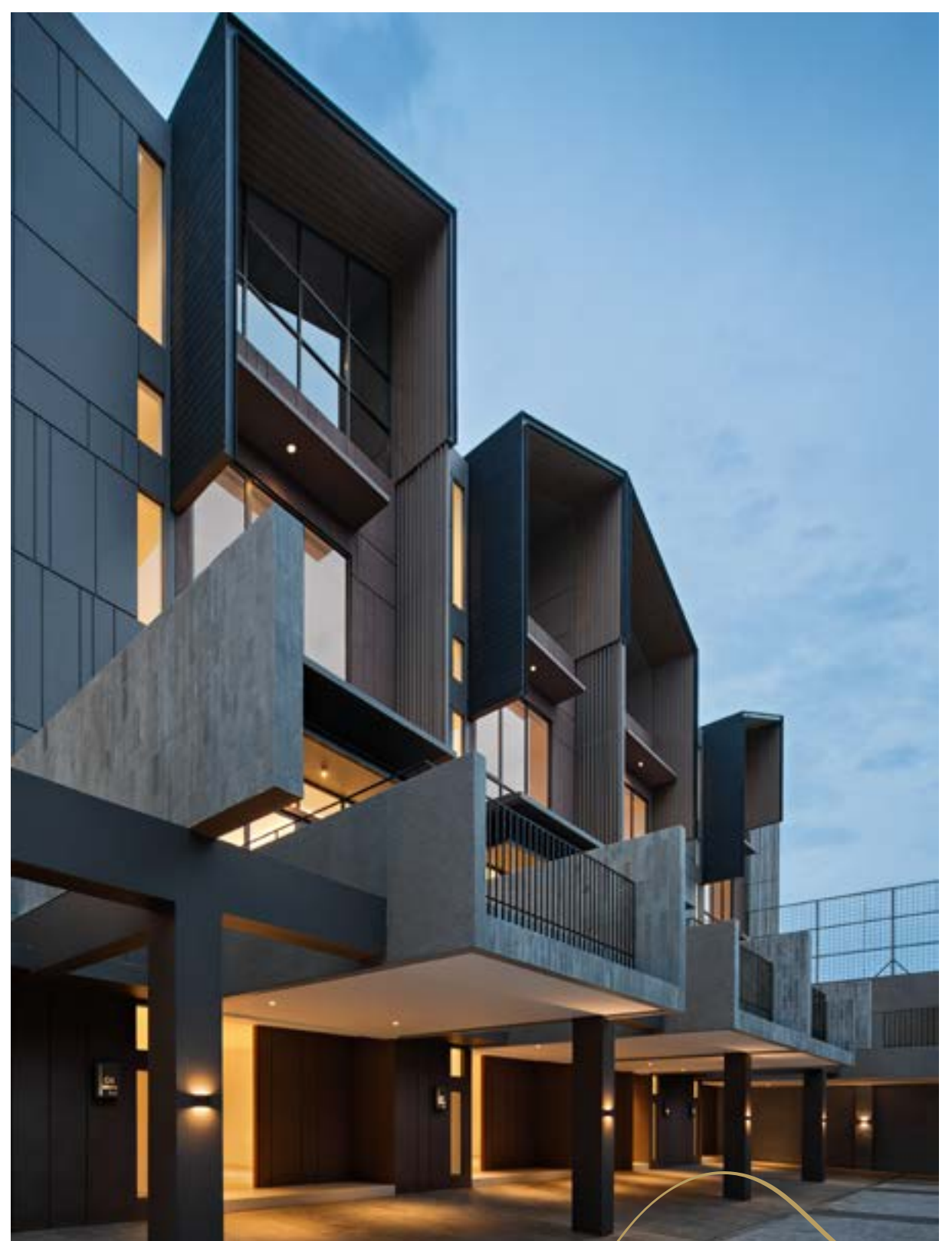
Proudly developed by:

Huis Property

Our Portfolio:

Kemang Huis
TOWNHOUSE

North Kemang Huis
TOWNHOUSE





Jalan Kemang Utara No. 32, South Jakarta

 0813 8888 1825  @North.kemang.huis

Developed by:
Huis Property