



# NARAYA

## SERPONG

*Affordable Luxury*



Entrance Gate



Children's Playground

The new affordable luxury tropical contemporary living



## Eco Friendly House

1. Wide Car Porch
2. Panoramic Window
3. Cross Ventilation
4. High Ceiling Level
5. Roof With Deep Overhangs
6. High Roof Space To Reduce Heat
7. Columnless Spacious Layout
8. Flexible Layout Plan
9. Skylight For Natural Light
10. En-suite Bathroom
11. Centralize Water Heater System
12. Underground Infiltration Wells And Biotech Septic Tank

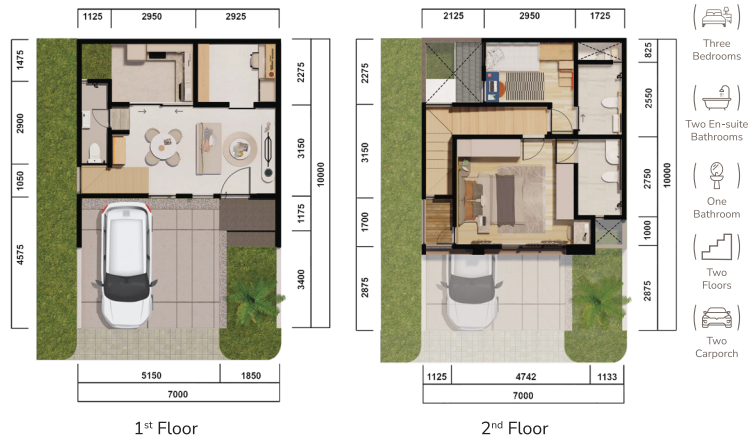


# Naraya Type 7



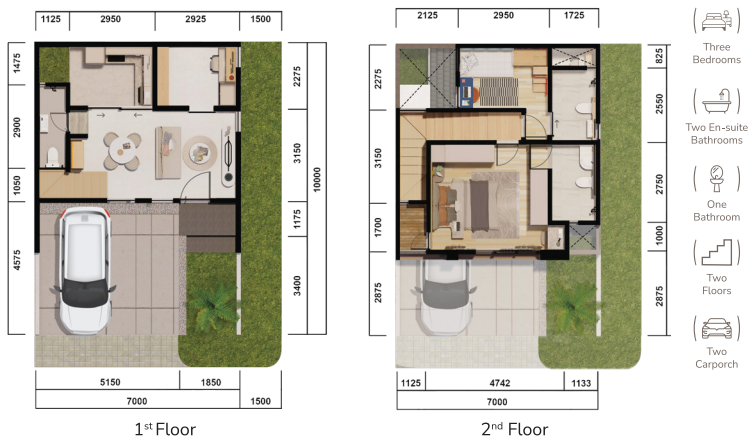
## Naraya Type 7 (Hoek Kiri)

88 m<sup>2</sup> Build Size 85-93 m<sup>2</sup> Land Size



## Naraya Type 7 (Hoek Kanan)

88 m<sup>2</sup> Build Size 93-95 m<sup>2</sup> Land Size



# Living Room Naraya Type 7



## Naraya Type 7 (Hoek Garden)

 88 m<sup>2</sup> Build Size  98,3 - 146,5 m<sup>2</sup> Land Size



Kids Bedroom

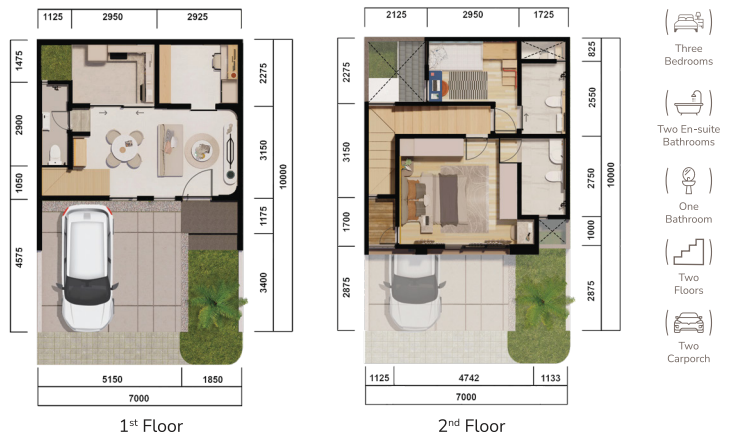


## Naraya Type 7 (Standard)

 88 m<sup>2</sup> Build Size  70 m<sup>2</sup> Land Size



Master Bathroom



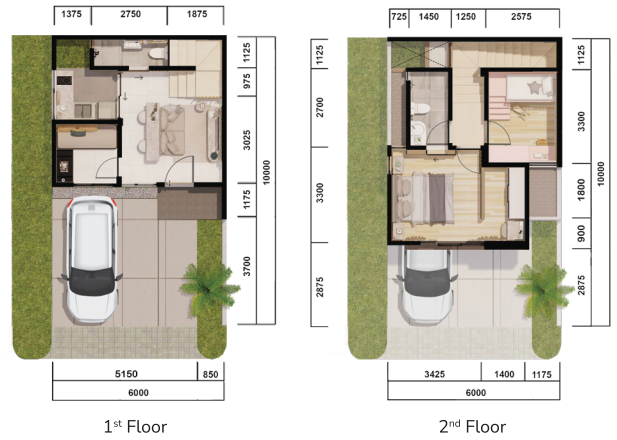
# Naraya Type 6



## Naraya Type 6 (Hoek Kiri)

 71 m<sup>2</sup>  
Build Size

 72-83.7 m<sup>2</sup>  
Land Size



Kids Bedroom

# Master Bedroom Naraya Type 6



## Naraya Type 6 (Hoek Kanan)

71 m<sup>2</sup> Build Size    72-94.4 m<sup>2</sup> Land Size



Living Room Type 6



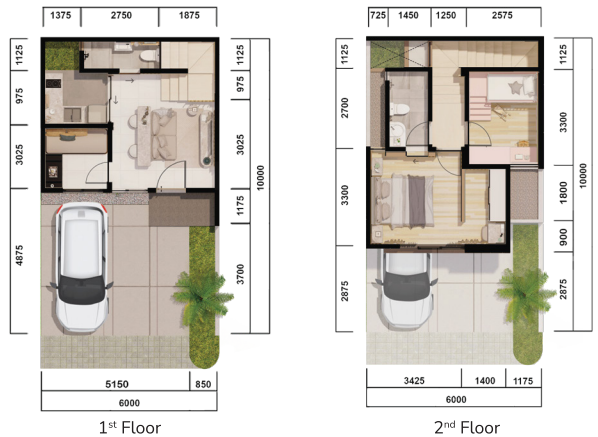
- Three Bedrooms
- One En-suite Bathrooms
- One Bathroom
- Two Floors
- Two Carporch

## Naraya Type 6 (Standard)

71 m<sup>2</sup> Build Size    60 m<sup>2</sup> Land Size



Master Bathroom



- Three Bedrooms
- One En-suite Bathrooms
- One Bathroom
- Two Floors
- Two Carporch



Located on the West of Jakarta



## Our Partners



### Site & Marketing Gallery

Jalan Jeletreng, Kecamatan Setu, Tangerang Selatan, 15314

### CHL Marketing Lounge

Ruko Sorrento Place No. 18-19, Paramount Gading Serpong, Kelapa Dua, Tangerang Selatan, 15810

[www.narayaserpong.com](http://www.narayaserpong.com)

Facebook, Instagram, YouTube, TikTok icons followed by [narayaserpong](https://www.instagram.com/narayaserpong)

Designed by:

atelier riri

Developed by:

CIPTA HARMONI LESTARI

Disclaimer:

While every reasonable care has been taken in preparing this brochure, specifications, contracting the sales models, and sales gallery/ show flat (the "materials"), the Developer and its agents and contractors do not warrant the accuracy of any of the Materials and shall in no way be held responsible for any inaccuracies in their contents or between the Materials and the actual unit when built. The Developer shall not be bound by any statement, representation, or promise (written or oral) by its agents and contractors. All statements and depictions are believed to be correct but are not to be regarded as statements or representations of fact. The PSU shall form the entire agreement between the Developer and the Purchaser and shall supersede all statements, representations, or promises made prior to the signing of the PSU. All information, specifications, layout plans, building plans, location of facilities, finishes, appliance selection, and visuals are subject to any changes as may be required and approved by the Architect, Developer, and/or by the relevant authority and may be changed without notice. The Materials are not intended to be contractual documents and shall not form part of any offer or contract. Visuals, renderings, illustrations, models, showflat displays, and photography are artist's impressions only and none can be regarded as representation of fact. Floor areas are approximate measurements only and not to scale. It is subject to final survey. The property is subject to inspection by the relevant authorities to comply with current codes of practice.

All information, specifications, rendering, visual representations, and plans are current at the time of publication and are subject to change as may be required by us and/or the competent authorities, and shall not form part of any offer or contract nor constitute any warranty by us and shall not be regarded as statements or representations of fact. All plans are subject to amendments as directed and/or approved by the building authorities. The PSU shall form the entire agreement between us as the Developer and the Purchaser, and shall supersede all statements, representations, or promises made prior to the signing of the PSU and shall in no way be modified by any statements, representations, or promises made by us or the Marketing Agents.