



SAVYAVASA

***Savyavasa***

*/s.a.vy.a.va.sa/*

(adv.)

a state of living focused on balance; the ability to stop time and be in the moment, surrounded by a community that wants to know you as an individual, where you can embrace your flaws and be raw; the freedom to live your passion, lead a life of purpose by doing what matters to you.

S A V Y A V A S A



Savyavasa presents a unique living environment beautifully made by world-class visionaries, whose mission is to deliver a concept once only imagined as a dream in South Jakarta.



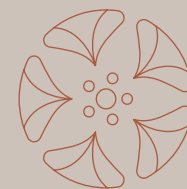
Savyavasa is at the centre of Jakarta's most vibrant and culturally rich environment. This is the address where artful traditions are reinvented within an innovative setting that frees the soul to explore new passions, to pamper every corporal need and find the balance of life.



*At the entrance of Savyavasa is a cluster of humble flower and plants sellers whose presence has become a trademark of the area for decades.*

Made possible by the unique partnership of JSI Group and Swire Properties, trusted visionaries whose experiences and reputations are evidenced by their successful projects. Savyavasa is the fulfillment of a dream for a natural haven, often sought but never found - until now.

With a gift of mother nature whose elements sustain life and promote inner peace, Savyavasa reimagines an oasis of tranquility where urban dynamism is tempered with serenity, providing a near perfect living experience that will bring harmony to every life.



CRAFTING HARMONY, PERFECTED BY NATURE

i

PROLOGUE

## Introduction

1

CHAPTER 01

## Defining Savyavasa

17

CHAPTER 02

## The Development

65

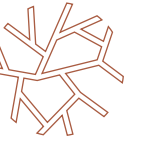
CHAPTER 03

## Acknowledgement



## DEFINING SAVYAVASA

*Our Belief of  
Harmonious Living*







SAVYAVASA is

TIME

Hit pause and look around, life at Savyavasa provides the luxury of living in the moment, be it spending leisure time to recharge or finding focus to accomplish what matters.



SAVYAVASA is

PASSION



More than just a physical home, Savyavasa provides spacious living space that allows personalised lifestyles to be pursued and shared. Here is where passion becomes alive.



SAVYAVASA is

PURPOSE

Through purposeful design and the utmost attention given to every space, Savyavasa defines the essence of refined elegance down to the smallest detail.



SAVYAVASA is

#### DISCOVERY

The delight of having the freedom to discover everlasting bonds begins here. Savyavasa fosters connections beyond apartment walls by creating a community that accepts and celebrates individual values.



SAVYAVASA is

SERENITY

Savyavasa presents a safe haven where body and mind are transported away from the hustle and bustle of the city; a quiet healing place to retreat to after a long day.



SMART CONTROLS



Personalise and set ideal temperature for ultimate comfort, even when residents are not at home.



Open and close curtains remotely, and personalise the settings.



Set temperature and manage cooking settings on smart kitchen appliances.



Unlock the door with the app from anywhere in the world.



Personalise your smart home with settings and preferences saved to your profile for one room or the entire house, only for you and your loved ones.



Connect with sensors to track the air quality.



Voice activated technology allows residents to activate smart appliances through voice command.



Control lighting and scene preferences via the app.



Remotely control your home in real-time across your smart devices such as your air conditioner to prepare for your arrival at home with accessibility at comfort.

SMART COMMUNITY



Conveniently book facilities and check bookings on mobile.



Interact with visitors through video on the app and grant access remotely.



Receive parcels when residents are away from home. Receive notification and unlock the parcel box via the app.



Send a personalised e-invitation or an instant QR pass for your visitors with utmost convenience and security.



Arrive home effortlessly with integrated license plate recognition system in the car park barrier system.

SMART LIFESTYLE



A list of lifestyle services from third-party lifestyle providers will be integrated into the lifestyle section within the app.



Savyavasa is the first Artificial Intelligence home in Indonesia, with seamless control, convenient facility booking, and secure visitor access grants using easy messaging platforms such as WhatsApp.

SMART CONNECTIVITY



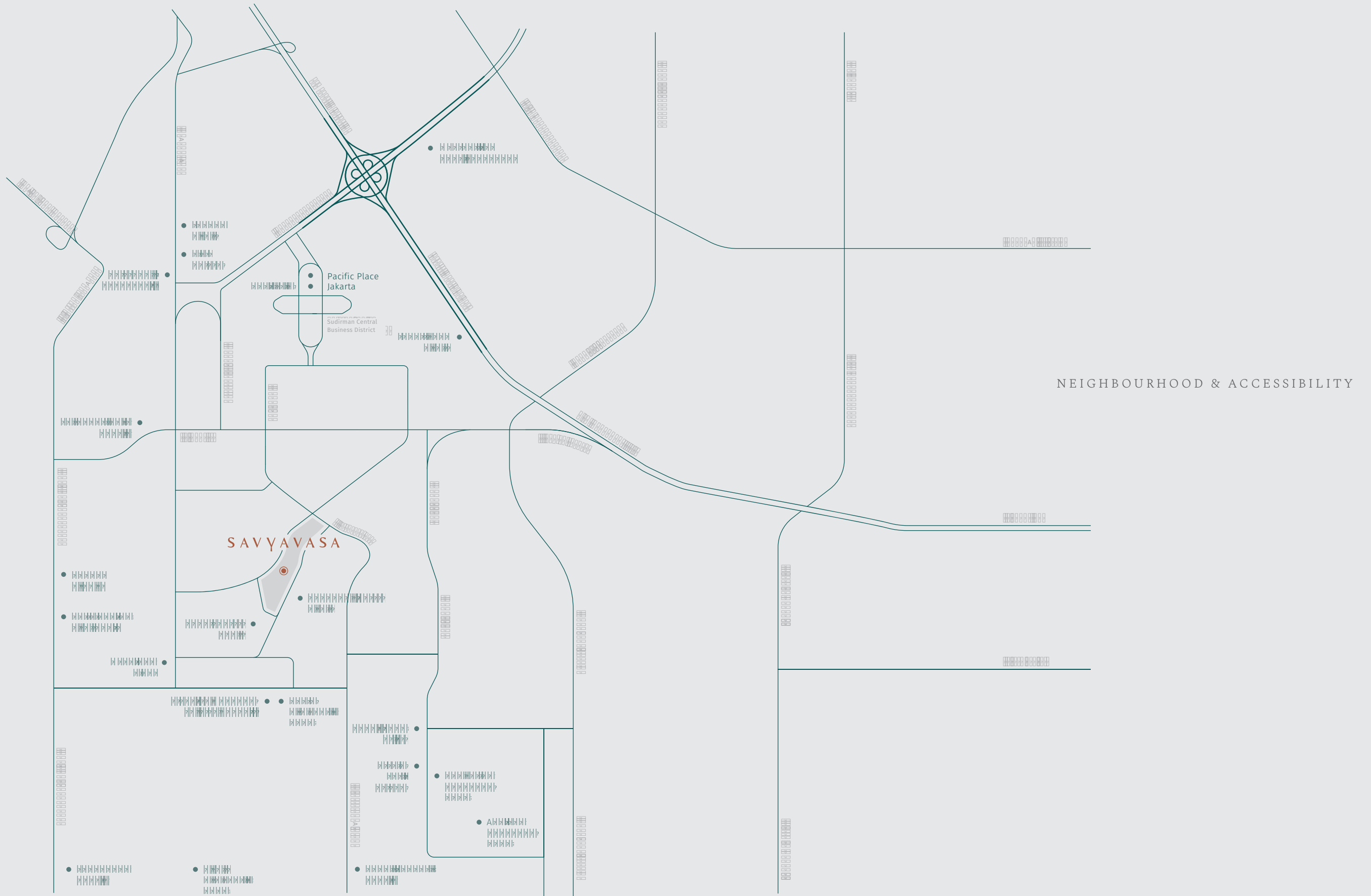
SAVYAVASA IS  
CRAFTING HARMONY,  
PERFECTED BY NATURE

# THE DEVELOPMENT

*At Home in Savyavasa*









MASTERPLAN

Set amongst three hectares of lush landscape, Savyavasa offers an exceptional living experience with exclusive amenities.

EXCLUSIVE AMENITIES

1. Leisure Pool
2. Lap pool
3. Hammam (spa)
4. Private club indoor pool
5. Private club gym
6. Arrival/lobby Tower I
7. Private lift Tower I 3BR
8. Private lift Tower I 4BR
9. Multifunction court
10. Cafe
11. Kids care
12. Multifunction room
13. Arrival/lobby Tower II & III
14. Lobby Tower II
15. Lobby Tower III
16. Gym
17. Jogging track
18. Extended jogging track
19. Outdoor kids playground
20. Barbeque pit

OTHER FACILITIES (LEVEL B1)

- Clinic
- Charging stations
- Shops (minimarket)



The Hammam, inspired by the traditional Turkish spa, is a sanctuary for mindful relaxation.

EXCLUSIVE AMENITIES

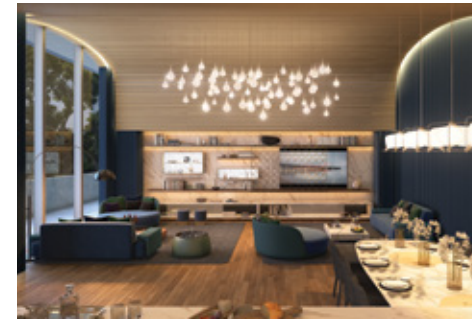
Incorporating an array of carefully designed amenities, Savyavasa provides its residents with the opportunities to experience a unique quality of life.



Outdoor kids playground



Gym



The multifunction room at Tower II



Leisure pool view from gym



Kids care

## DESIGN CONCEPT

Amidst the dense skyline that is now synonymous with Indonesia's metropolis, Savyavasa sits on a pristine parcel of greenery, a remnant from the last residential area conceived as part of the European Garden City Movement.



*An expansive open lawn welcomes residents to explore the beauty of nature.*

## SCDA ARCHITECTS

Informed by the historic significance of the site, the Singapore-based SCDA Architects combines the spaciousness and cooling cross ventilation of Dutch colonial dwellings with the modern benefits of elevated apartments.

The main Tower I features interlocking system that provides spaces for double height volumes in the living dining area, allowing natural light and fresh air to stream into the apartments. On the façade, architectural fins give all three towers their distinctive looks while blocking direct sunlight to reduce heat gain inside the buildings. The long balconies that connect the living dining area with bedrooms provide an indoor/outdoor experience which allows residents to appreciate the stunning views of the green environment against the backdrop of Jakarta's CBD from within the confines of private homes.

## INTARAN DESIGN

Maintaining the green environment of the site and inviting the surrounding parks into the doorstep of Savyavasa, Bali-based landscape design firm Intaran Design has envisioned a lush and contemporary landscape that visually and physically connects the towers and recreational facilities.

Tall tree canopies help to distract the eye from the rising towers transitioning down into the garden and pool areas on the ground level. In the midst of all this greenery, 1 km jogging path and an expansive open lawn provide the space for residents to unwind and be at one with nature.

## INTERIOR CONCEPT

Savyavasa redefines the concept of understated luxury by reinterpreting natural landscapes and Indonesia's robust artisan culture in modern living.



*The view of the Tower I lobby from the lap pool.*

## YABU PUSHELBERG

Yabu Pushelberg is an award-winning interior design firm with offices in New York and Toronto. Drawing from nature and Indonesian tradition, the firm brings together warm and luxurious feel to the amenity spaces and residential units in Tower I.

Natural tonal finishes are incorporated to mimic the lush surroundings, and contrasted by rich marble, millwork and custom handcrafted textiles featuring Tenun motifs made by local artisans. The inspired design provides a quiet elegance whilst capturing the spirit and pride of local culture.

## RICHARDSON SADEKI

Inside the Tower II and III, the world-renowned, New York-based interior design firm Richardson Sadeki has crafted a design language that is contemporary with a touch of Indonesian cultural heritage for the public areas and apartments.

Screens that work as translucent partitions between spaces are decorated with geometric Batik Kawung motif, whose symbolic meanings cover the balance of the four classical elements of fire, water, earth and air, as well as the attributes of honesty and purity.



*The design of the Tower II and III drop off.*

## ART IN SAVYAVASA

Art presents a gaze into a world of inspiration. Thirteen acclaimed artists were chosen for their individual approaches to provide Savyavasa with a striking display of artwork that delights and inspires.

**BAGUS PANDEGA**  
(Indonesia)

Based in Bandung, Bagus Pandega's work is highly innovative as he experiments with movement, sound and light through the use of electronics. Record players, old radio transistors, lamps, LED's and various objects are commonly seen in Bagus' artwork, creating interactions and optical feasts that adapt to each environment.

**CHONG SIEW YING**  
(Malaysia)

Malaysian artist Ching Siew Ying is well known for her dynamic gestural brush strokes and expressive compositions adapted from Chinese and western technical influences. Her work is profoundly emotive, embracing broad themes such as nature, human sentiments, as well as referencing on literary themes and concepts.

**CLAUDIA DIAN**  
(Indonesia)

Claudia Dian is a young artist who experiments with the craft of painting and photography. A graphic art graduate from Institut Teknologi Bandung, her work is highly representable as her artistic thought processes the human interconnection with ecosystem.

**HENGKI KOENTJORO**  
(Indonesia)

Javanese artist Hengki Koentjoro is an accomplished photographer specialising in capturing the spectral domain that lies amidst the shades of black and white. Exploring along the borderlines of light and shadow, his work celebrates complexity in the minimalist form and delves the spiritual in the physical.

**INES KATAMSO**  
(Indonesia)

Indonesian - French artist Ines Katamsa takes pride in her duality of identity through her artworks. She frequently uses organic shapes and colours that are translated into paintings and murals. Her art is a natural process of self-criticism and discovery.

**IRA CARELLA**  
(Indonesia)

As an art director and illustrator of branding studio Thinking\*Room, Ira Carella's artwork is prominently adapted from illustrative technicalities. Outside of branding, her work consists of cut-out comical characters translated through watercolour, paper and mixed media.

**LIE NAY TJEN**  
(Indonesia)

Javanese born artist Lie Nay Tjien was highly influenced by his mother's creative process of jewellery making exposed at an early age. His art practice is highly involved with maintaining emotion and feeling within each piece through the application of the latest industrial materials and natural exotics.

**MARISA R. NG**  
(Malaysia)

Malaysian artist Marisa Ng derives most of her work from the attachment she feels towards her late grandmother. The intense colours and brush strokes shown in her abstract paintings are aligned with the passionate emotional attachment of her own artistic journey to free herself from the confines of figurative art and express herself as an artist.

**MUJAHIDIN NURRAHMAN**  
(Indonesia)

Based in Bandung, Mujahidin Nurrahman is one of the prominent Indonesian artists who explores the world of perceptions through the layers of arabesque motifs. His work challenges pre-conceived perceptions that exist on a multitude of social, political and spiritual beliefs and practices.

**REGA AYUNDYA PUTRI**  
(Indonesia)

Rega Ayundya Putri's work amasses highly intricate details created through solemn ballpoint strokes to expose an intimate, quiet conversation between her and her subconscious.

**SANCHIA HAMIDJAJA**  
(Indonesia)

Sanchia Hamidjaja is a visual artist and illustrator. With 7 years of experience in the advertising industry, her work illustrates comical elements which portray a more playful and brighter side of art. Mostly consisting of monochromatic illustrations, she narrates stories in a vulnerable and honest manner.

**SINTA TANTRA**  
(Indonesia)

An artist of Balinese descent, now resident in the UK, Sinta Tantra is strongly influenced by her Balinese heritage and traditions. Her art is a celebration of light and colour drawn from the language of abstract geometry. She is especially interested in how art functions outside the gallery - its place and placement in the everyday. While she works primarily as a painter, Tantra's practice extends to public art, sculpture and the creation of immersive environments across the World.

**TITO RIKARDO**  
(Indonesia)

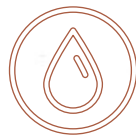
Jakarta-based artist Tito Rikardo captures human interest and street photography through his travels. He believes that both of these genres record the spontaneity of human habits in everyday life. Each one of his works displays a beautiful yet honest encounter, every scene narrates a magnificent yet intimate story of our world.



Sinta Tantra painted a mural depicting the pursuit of balance, titled "Statera", exclusively for Savyavasa.

SUSTAINABLE DEVELOPMENT

Savyavasa puts strong emphasis on nature, offering a green sanctuary that goes well beyond the apartment walls. Implementing the development partners' strong fundamental value for environmental sustainability, nature continues to breathe and thrive.



SOIL MOISTURE SENSOR

Rainwater sensors detect moisture levels in the soil and connect to irrigation system, enabling the reduction of water usage for the landscaping.



REPLANTING TREES

More than 130 pre-existing, mature trees are preserved and will be replanted on the site.



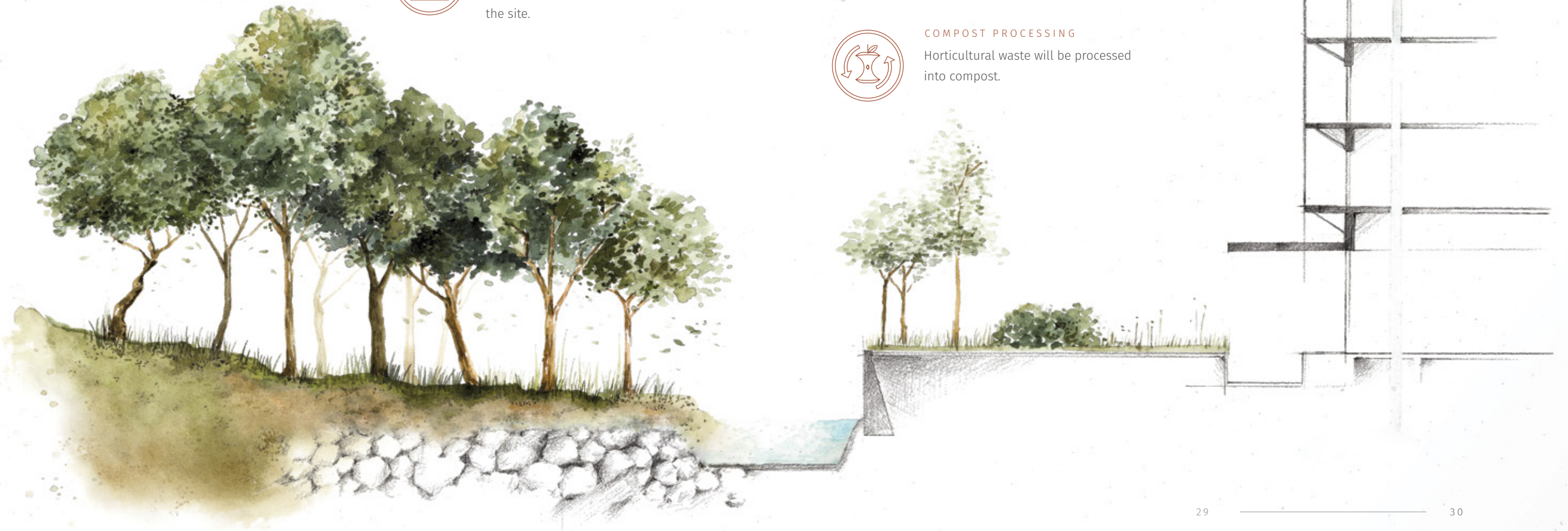
COMPOST PROCESSING

Horticultural waste will be processed into compost.



WATER RECYCLING

Rainwater harvesting and wastewater recycling system for landscape irrigation.





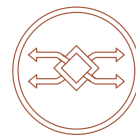
## GREEN BUILDING FEATURES

The idea of well-being is central to Savyavasa's design philosophy. As the first apartment project in Jakarta built with Greenmark Gold standard, Savyavasa upholds the vision with amenities and residential units complemented with carefully curated features, including pioneering the use of air quality sensors and smart air filters.

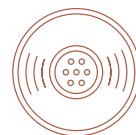
## ① HEALTHY AIR QUALITY



Air filter system (PM 2.5) eliminates micro bacteria to ensure healthy indoor air quality.



Smart ventilation system helps reduce energy consumption.



Smart sensor to track air quality.

② Energy efficient LED and T5 lights.

③ Landscape lighting.

④ Energy efficient home appliances for air conditioning system and kitchen.

⑤ Double glazed units and low-e windows reduce heat transfer between the apartments and the outside.

⑥ Motion sensors at lift lobbies, staircases and toilets.

⑦ Carpets, ceilings and other parts of buildings' interior are made of recycled or environmentally friendly materials equipped with local greenmark certification.

⑧ Low VOC paint and environmentally friendly adhesive on at least 90% of applicable areas.

⑨ Best Water Technology (BWT) from Germany processes tap water into safe drinking water.

⑩ Electrical vehicle charging stations.

⑪ Compatibility with personal smart home devices.





## TOWER I

### 3- & 4-BEDROOM

Tower I presents 3- and 4-bedroom apartments with private lift lobby reserved for the most discerning individuals. The apartments feature a 6m double-height ceiling in the living dining area together with spacious balconies, providing unparalleled views of the natural environment and city beyond.

Offering the luxury of complete privacy, Tower I is further enhanced with a selection of exclusive amenities for its residents, including a private clubhouse equipped with an exquisite indoor pool and gym.

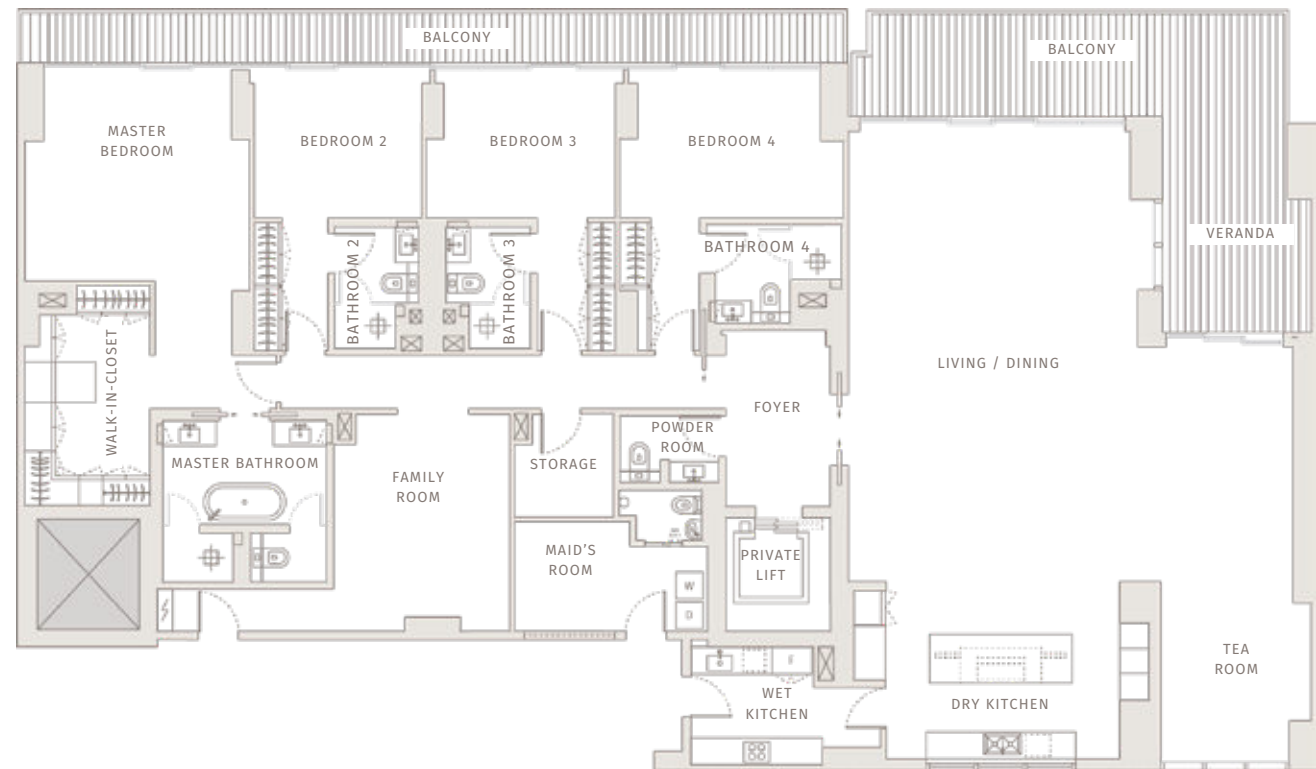
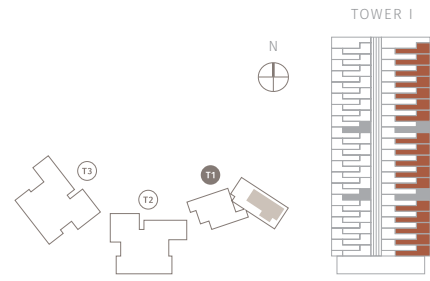
TOWER I

Unit A  
TYPE: 1 — 4BR A

FLOOR  
01, 03, 06, 08  
10, 15, 17, 19  
21, 23, 27, 29  
31, 33, 36, 38

SEMI GROSS FLOOR AREA  
496 m<sup>2</sup>

NET FLOOR AREA  
438 m<sup>2</sup>



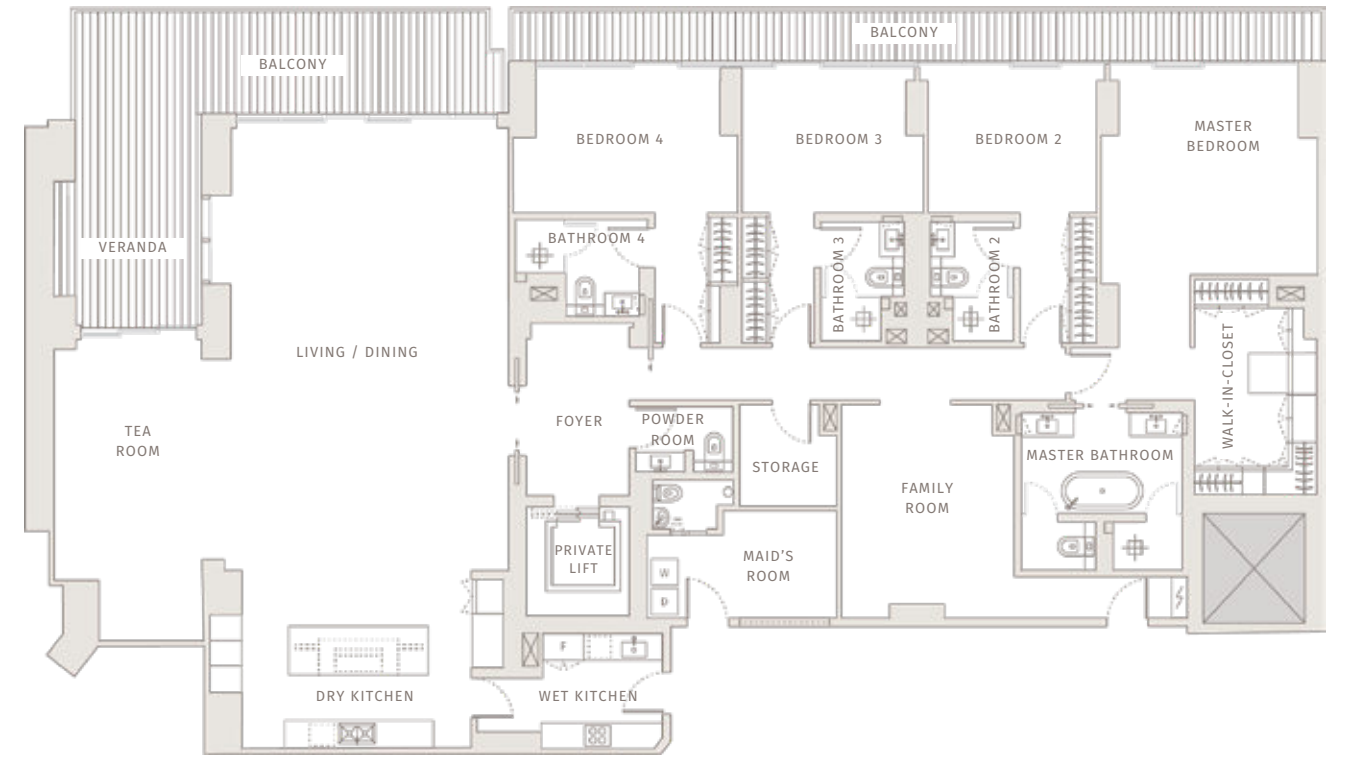
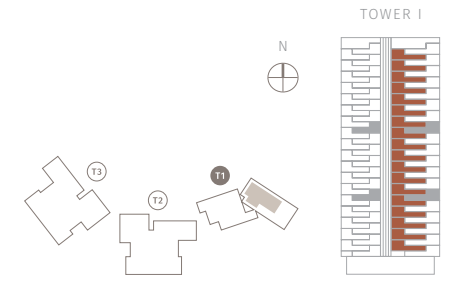
TOWER I

Unit B  
TYPE: 1 — 4BR B

FLOOR  
02, 05, 07, 09  
11, 12, 16, 18  
20, 22, 25, 26  
28, 30, 32, 35  
37, 39

SEMI GROSS FLOOR AREA  
485 m<sup>2</sup>

NET FLOOR AREA  
428 m<sup>2</sup>



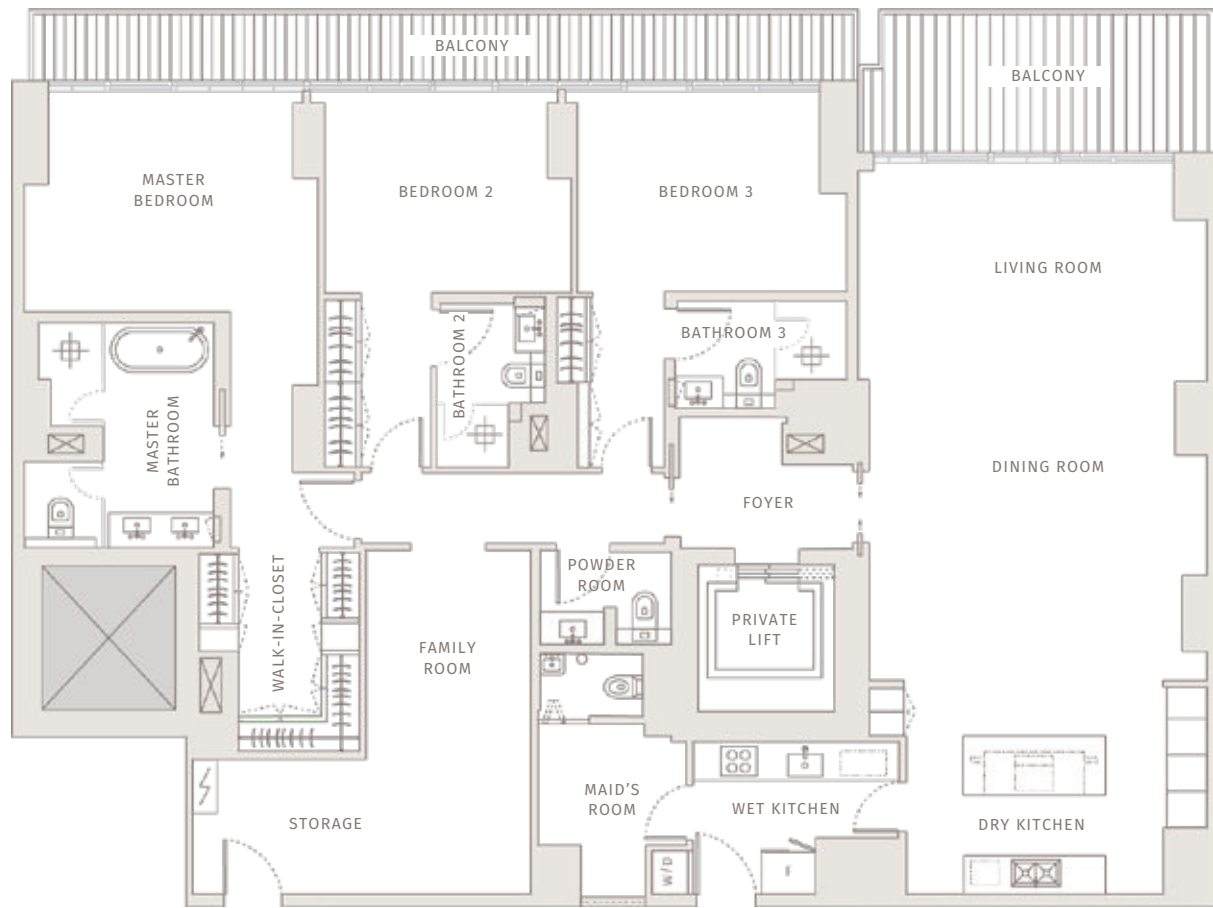
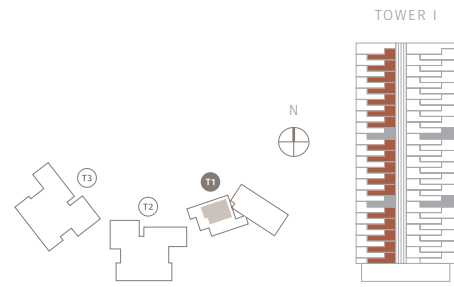
TOWER I

Unit C  
TYPE: 1 — 3BR C

FLOOR  
01, 03, 06, 08  
10, 15, 17, 19  
21, 23, 27, 29  
31, 33, 36, 38

SEMI GROSS FLOOR AREA  
325 m<sup>2</sup>

NET FLOOR AREA  
285 m<sup>2</sup>



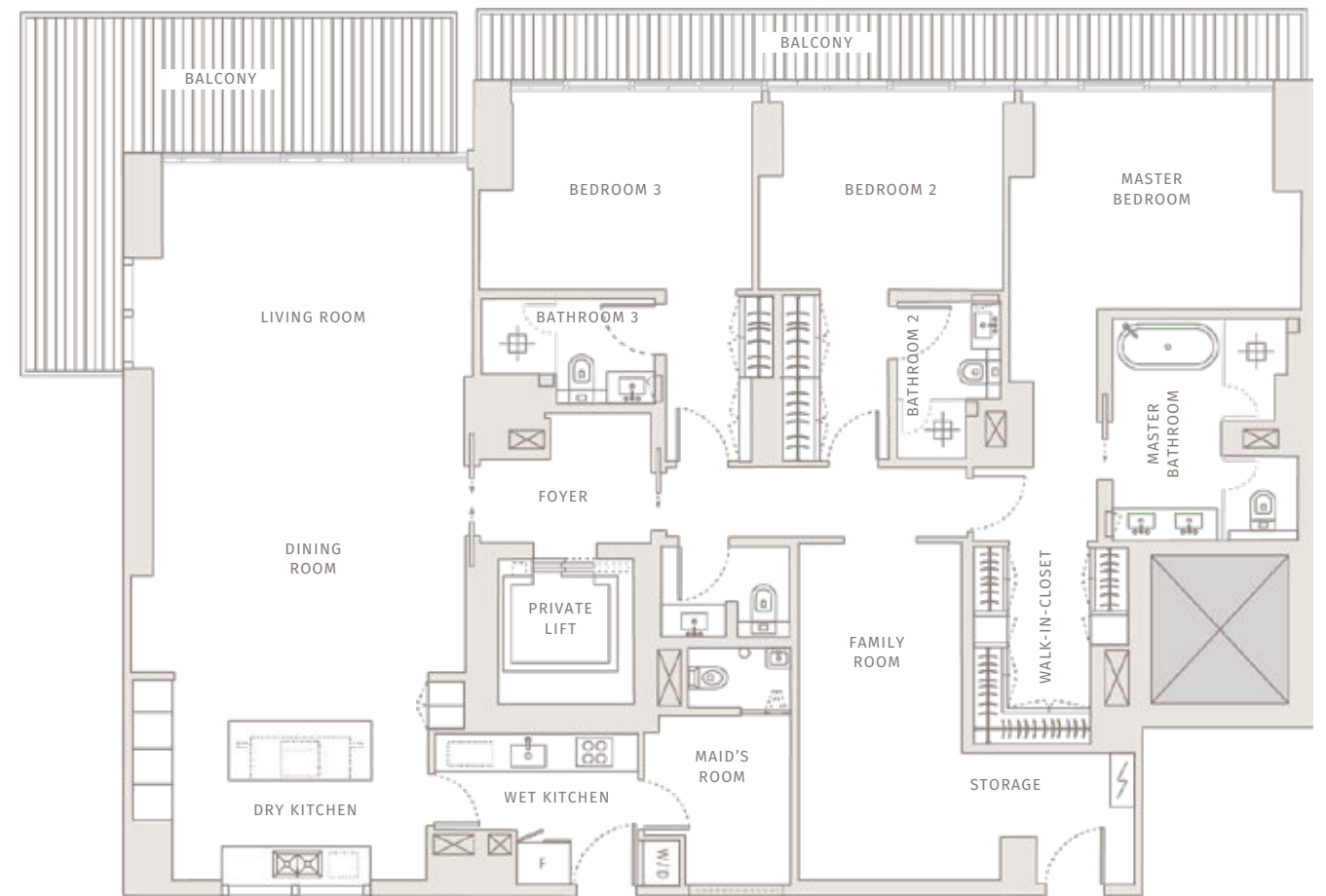
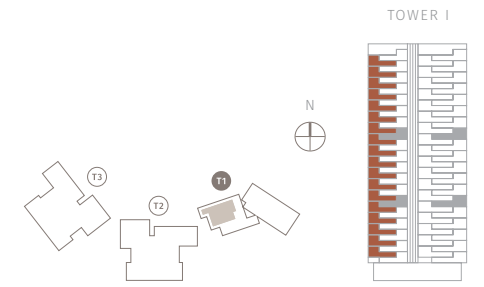
TOWER I

Unit D  
TYPE: 1 — 3BR D

FLOOR  
02, 05, 07, 09  
11, 12, 16, 18  
20, 22, 25, 26  
28, 30, 32, 35  
37, 39

SEMI GROSS FLOOR AREA  
336 m<sup>2</sup>

NET FLOOR AREA  
295 m<sup>2</sup>





## TOWER II & III

### 2- & 3-BEDROOM

The 2- and 3-bedroom apartments provide a range of layouts that are highly adaptable to the varying lifestyles of the occupants. The residents can enjoy amenities including a cafe, gym, spa, indoor children's play area, multifunction rooms as well as outdoor leisure and sport facilities.



**TOWER II & III**

**Unit A**

The 3-bedroom apartments are ideal for residents who desire the comfort of deluxe living space. Featuring private lift lobby, 3 en-suite bedrooms with balconies, a flexible study or media room and a spacious living dining area.



**TOWER II  
LAYOUT PLAN**

Layout plan for Tower II unit A with private lift inside the unit.

- 1 Private lift (Low zone)
- 2 - 5 Semi-private lifts
- 6 Service lift
- 7 - 8 Emergency staircase

TOWER II & III

Unit A

TYPE: 2 - 3BR A1

FLOOR

- 01, 02, 03, 05
- 06, 07, 08, 09
- 10, 11, 12, 15
- 16, 17, 18, 19
- 20, 21, 22, 23

LOW ZONE

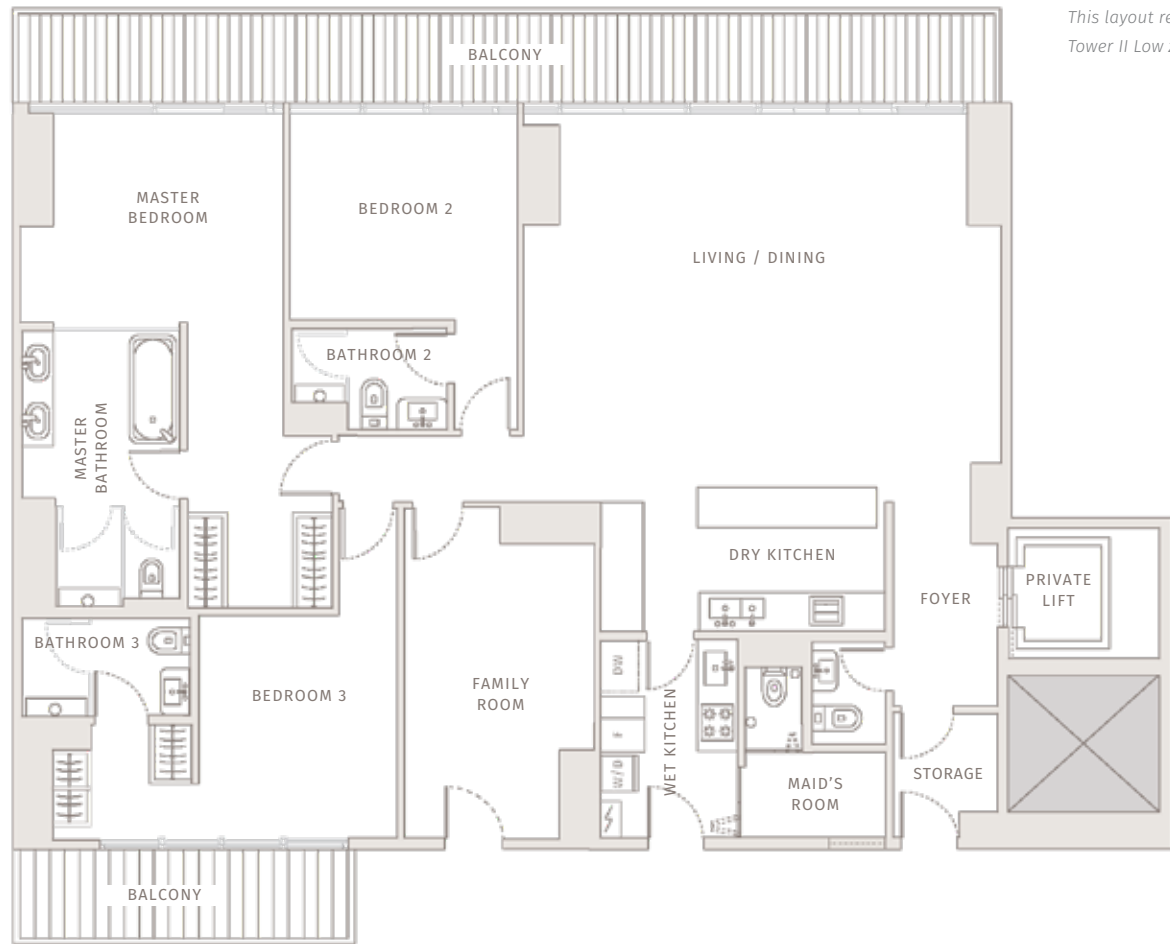
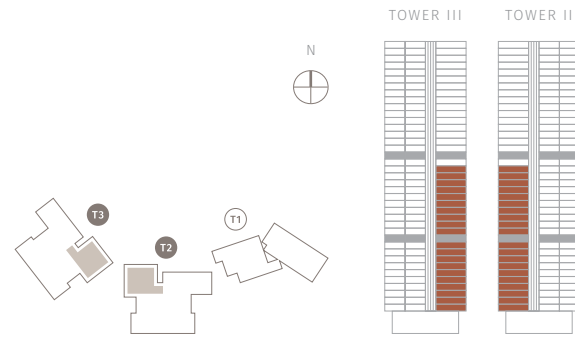
3 BEDROOM

SEMI GROSS FLOOR AREA

254 m<sup>2</sup>

NET FLOOR AREA

226 m<sup>2</sup>



This layout refers to Tower II Low zone.

TOWER II & III

Unit A

TYPE: 2 - 3BR A2

FLOOR

- 25, 26, 27, 28
- 29, 30, 31, 32
- 33, 35, 36, 37
- 38, 39, 40, 41

HIGH ZONE

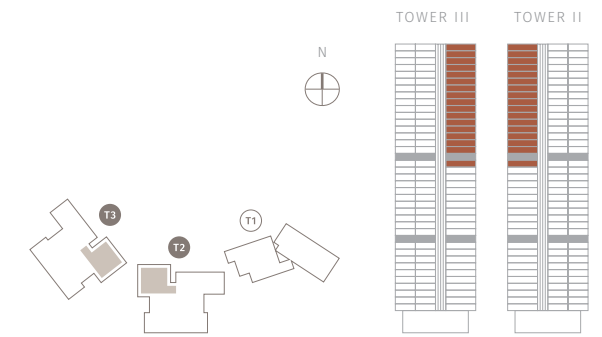
3 BEDROOM

SEMI GROSS FLOOR AREA

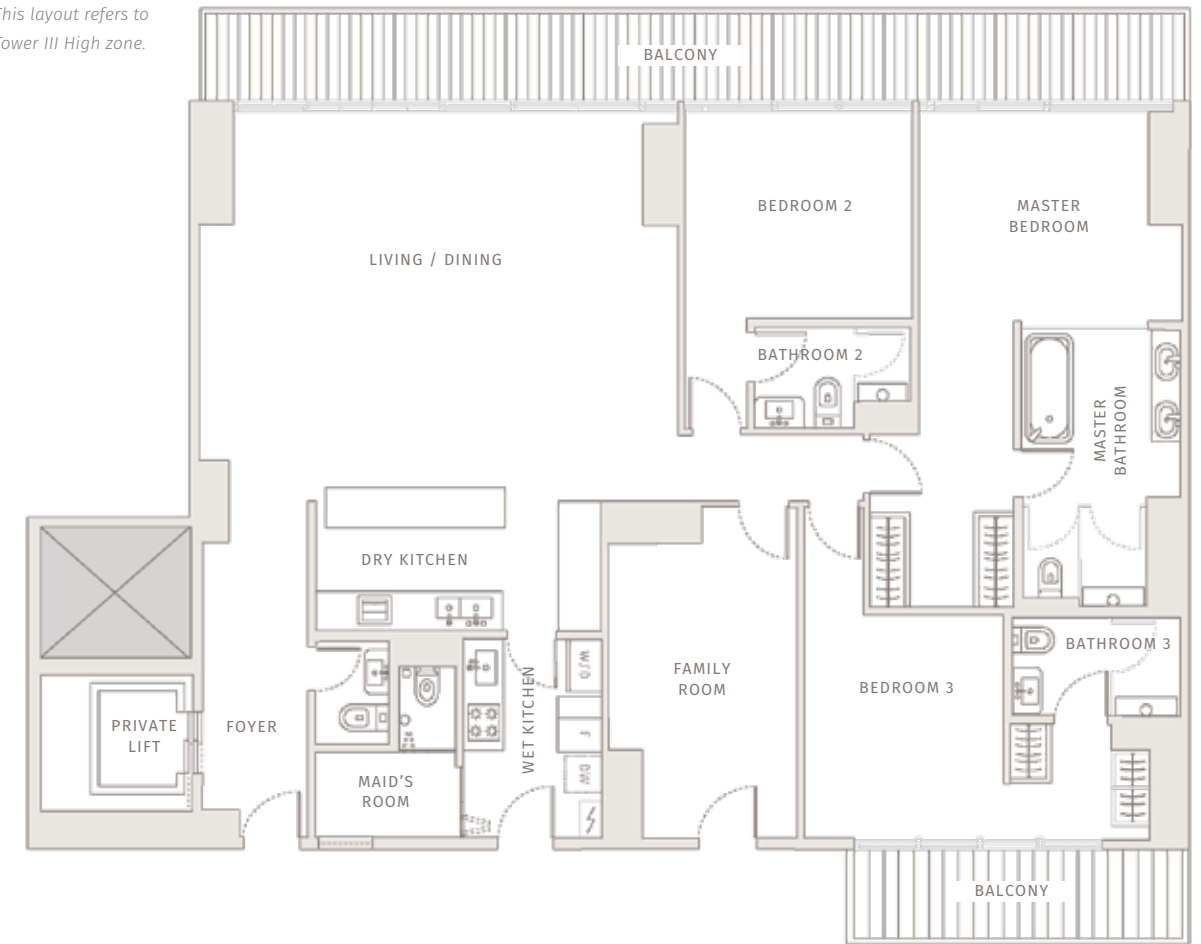
254 m<sup>2</sup>

NET FLOOR AREA

226 m<sup>2</sup>



This layout refers to Tower III High zone.



0 2 4 6 8 10m

0 2 4 6 8 10m

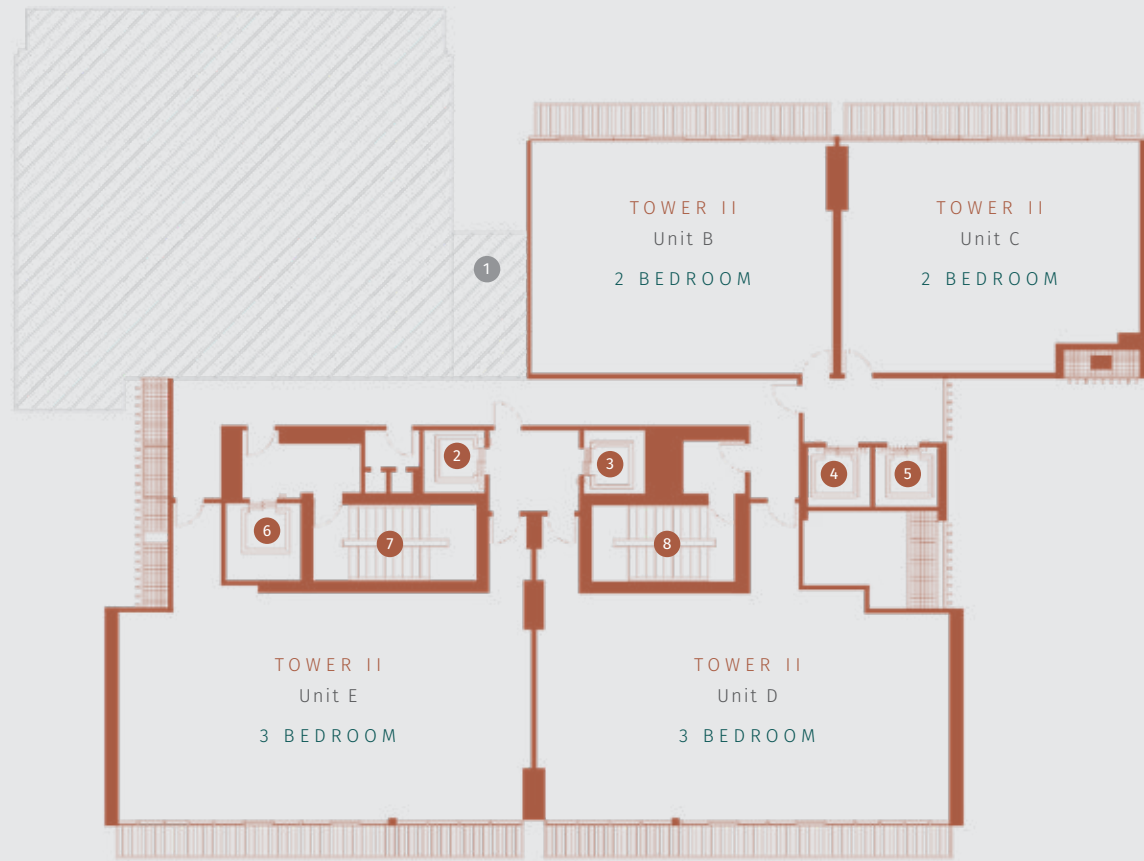


### TOWER II & III

Unit B, C, D and E

These 2- and 3- bedroom apartments are ideal for individuals, couples or small families. The living dining area and bedrooms are connected to a balcony with an unobstructed view. The guest bedroom could also be flexibly used as either a study or media room.





TOWER II  
LAYOUT PLAN

Layout plan for Tower II units B to E with semi-private lifts outside the units.

- 1 Private lift (Low zone)
- 2 - 5 Semi-private lifts
- 6 Service lift
- 7 - 8 Emergency staircase



TOWER III  
LAYOUT PLAN

Layout plan for Tower III with combined unit B & C into a 4-bedroom unit.

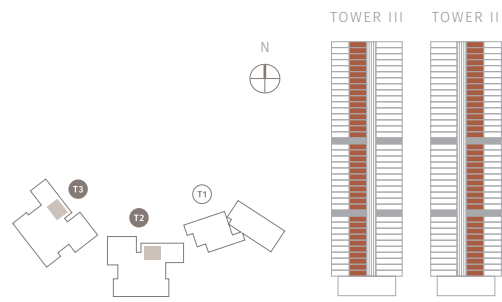
- 1 Private lift (Low zone)
- 2 - 5 Semi-private lifts
- 6 Service lift
- 7 - 8 Emergency staircase



TOWER II & III

Unit B  
TYPE: 2 - 2BR B

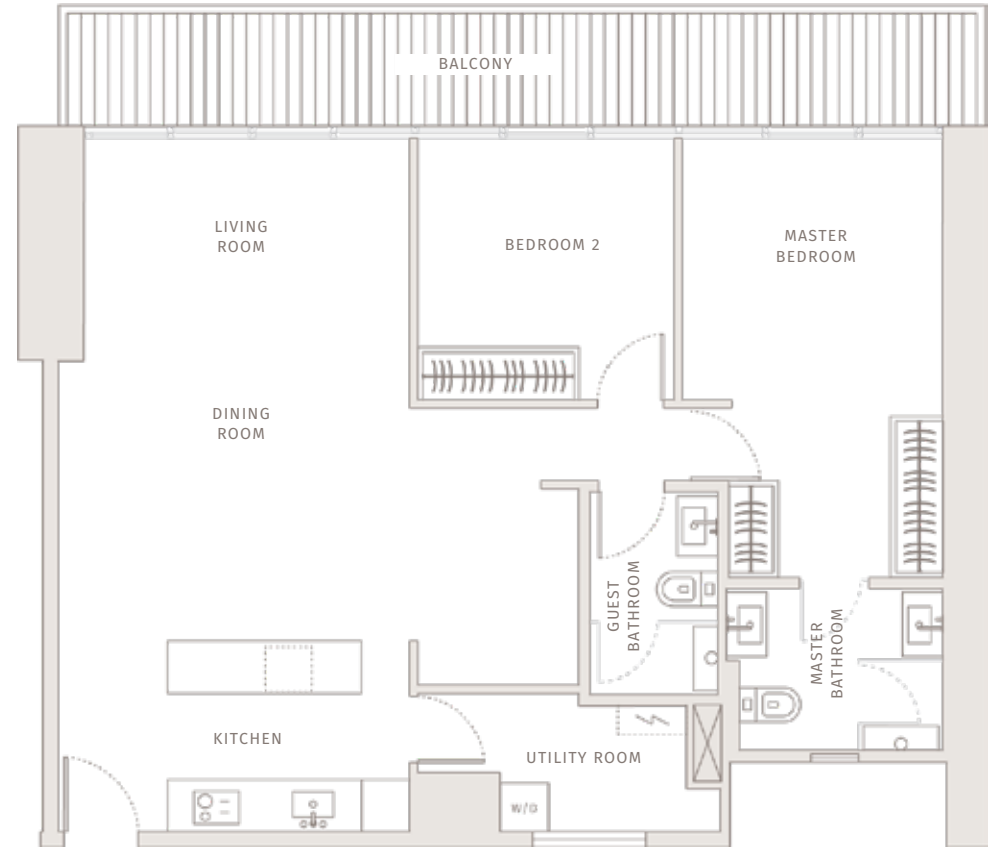
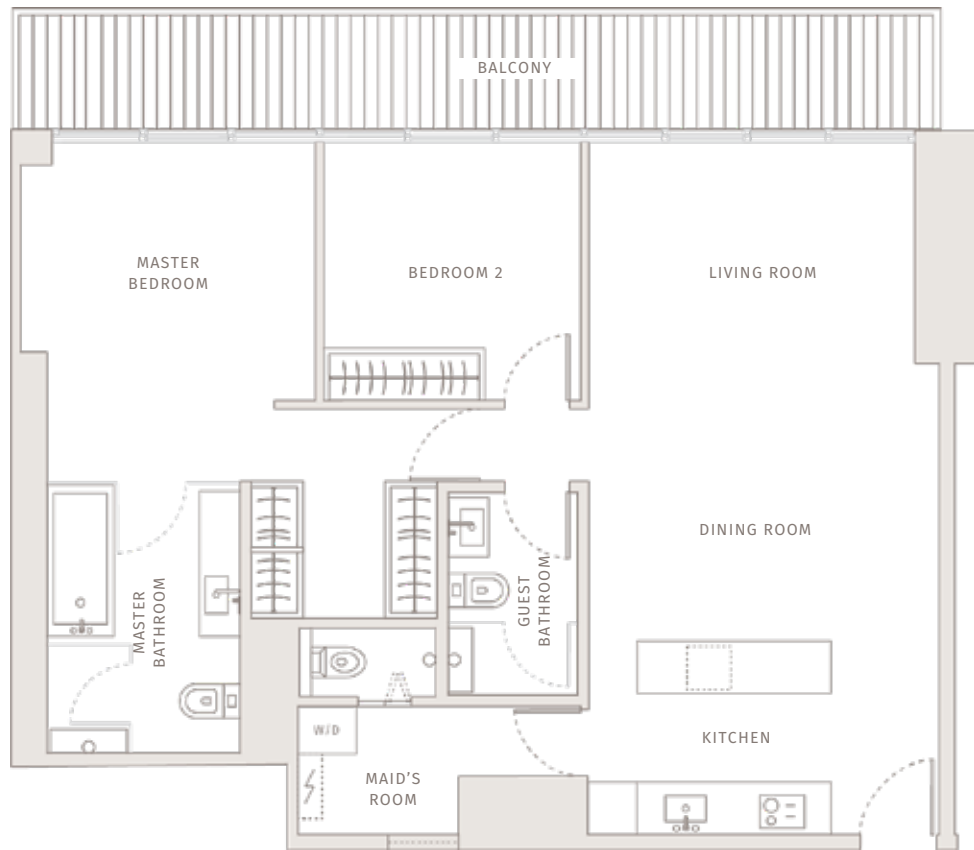
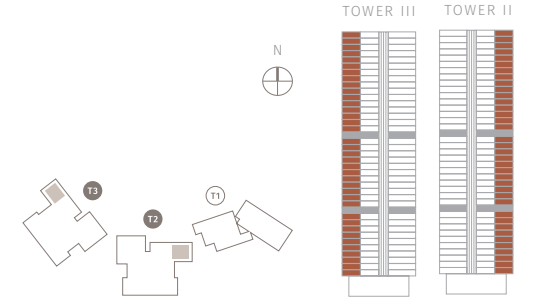
FLOOR	SEMI GROSS FLOOR AREA
01, 02, 03, 05	131 m <sup>2</sup>
06, 07, 08, 09	
10, 11, 12, 15	NET FLOOR AREA
16, 17, 18, 19	117 m <sup>2</sup>
20, 21, 22, 23	



TOWER II & III

Unit C  
TYPE: 2 - 2BR C

FLOOR	SEMI GROSS FLOOR AREA
01, 02, 03, 05	133 m <sup>2</sup>
06, 07, 08, 09	
10, 11, 12, 15	NET FLOOR AREA
16, 17, 18, 19	117 m <sup>2</sup>
20, 21, 22, 23	



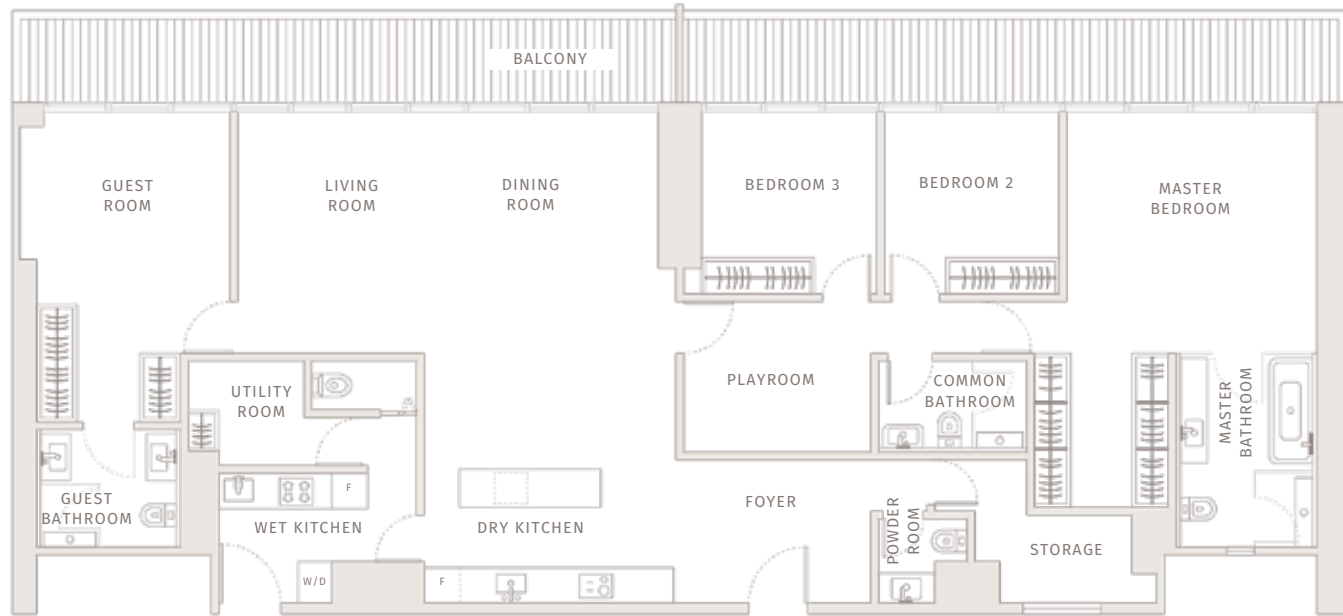
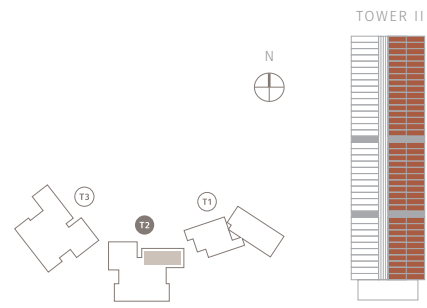
**TOWER II**

Unit B  
TYPE: 2 — 4BR B  
4 BEDROOM  
+ PLAYROOM

FLOOR  
25, 26, 27, 28  
29, 30, 31, 32  
33, 35, 36, 37  
38, 39, 40, 41

SEMI GROSS FLOOR AREA  
264 m<sup>2</sup>

NET FLOOR AREA  
234 m<sup>2</sup>



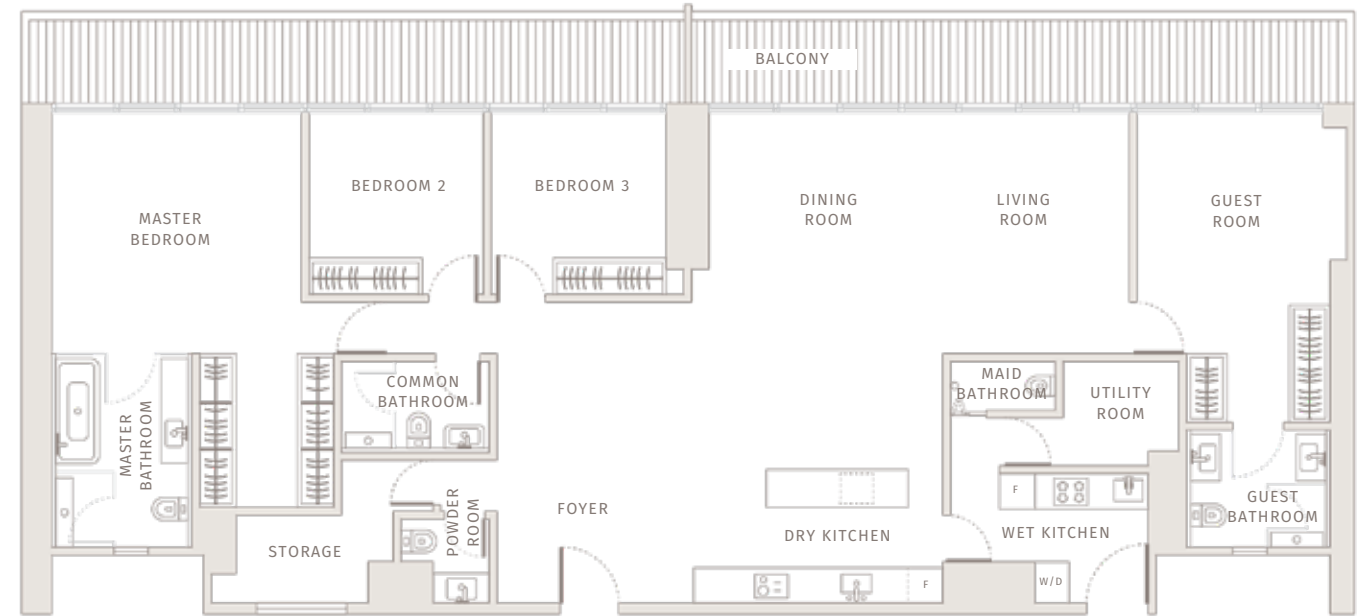
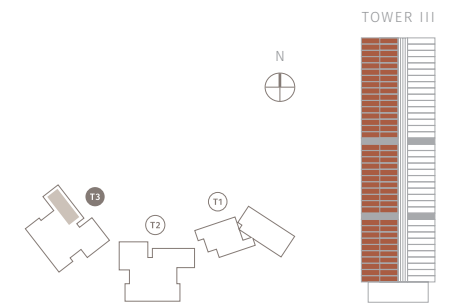
**TOWER III**

Unit B  
TYPE: 2 — 4BR B  
4 BEDROOM

FLOOR  
25, 26, 27, 28  
29, 30, 31, 32  
33, 35, 36, 37  
38, 39, 40, 41

SEMI GROSS FLOOR AREA  
264 m<sup>2</sup>

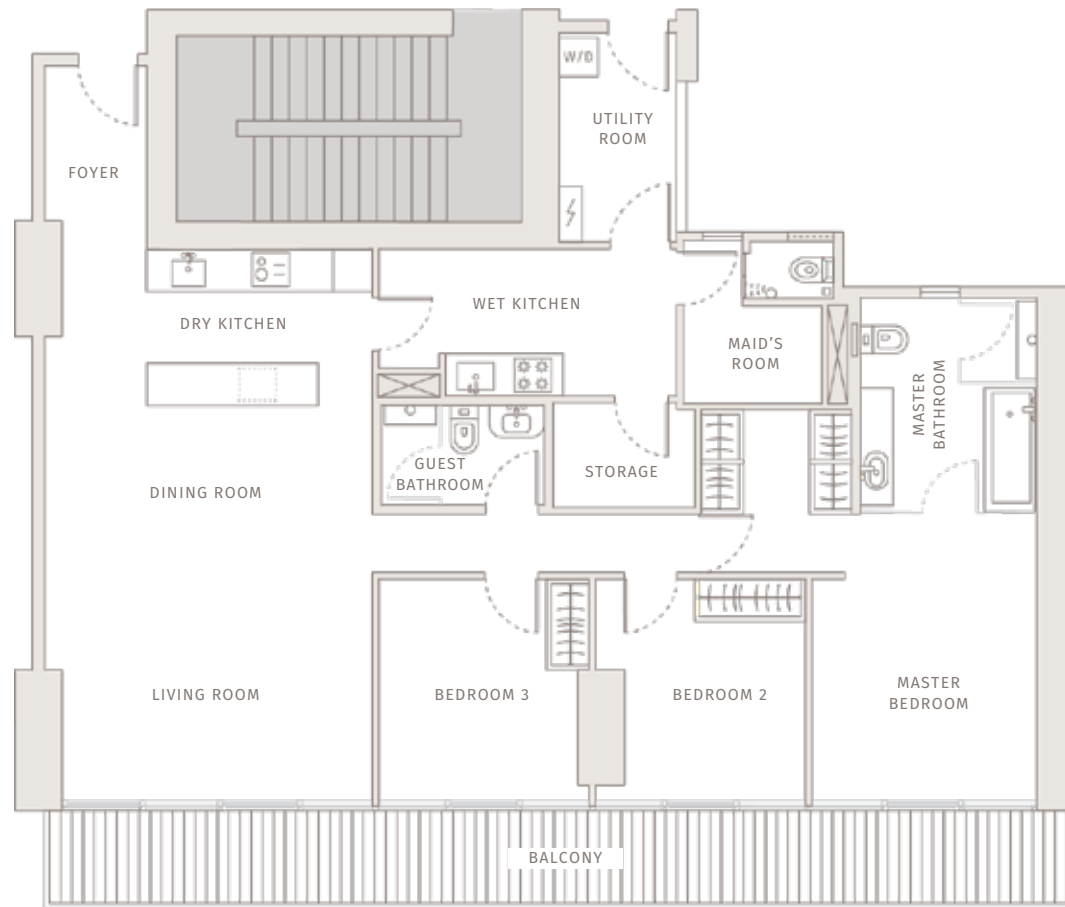
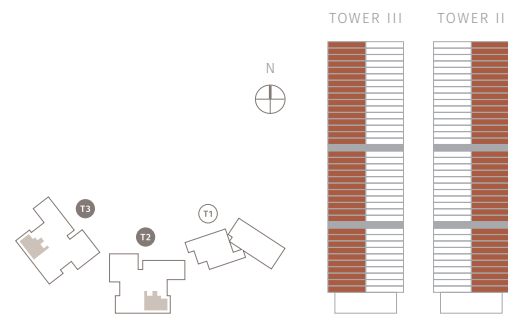
NET FLOOR AREA  
234 m<sup>2</sup>



TOWER II & III

Unit D  
TYPE: 2 - 3BR D

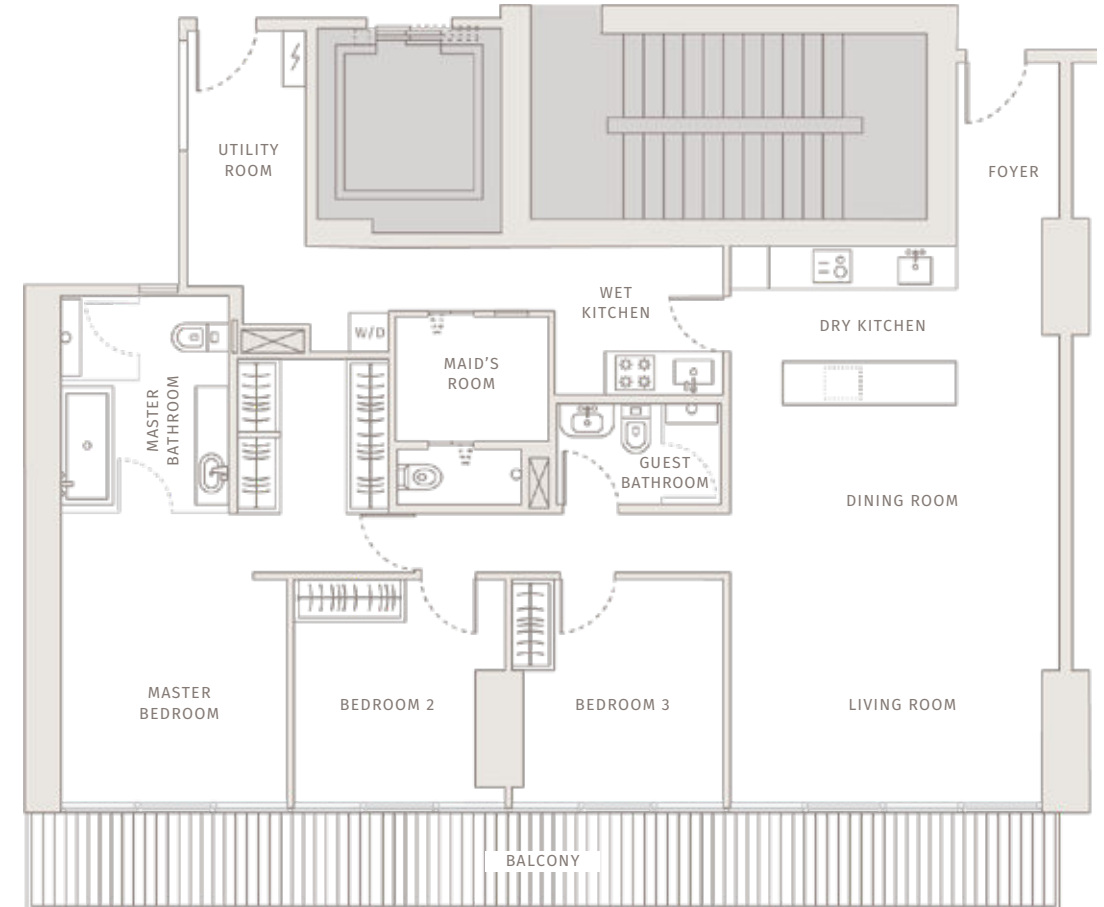
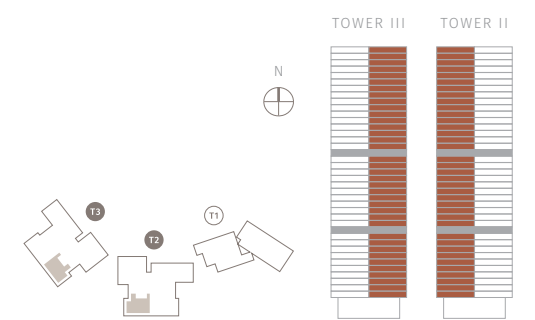
FLOOR	SEMI GROSS FLOOR AREA
01, 02, 03, 05	197 m <sup>2</sup>
06, 07, 08, 09	
10, 11, 12, 15	NET FLOOR AREA
16, 17, 18, 19	
20, 21, 22, 23	173 m <sup>2</sup>
25, 26, 27, 28	
29, 30, 31, 32	
33, 35, 36, 37	
38, 39, 40, 41	



TOWER II & III

Unit E  
TYPE: 2 - 3BR E

FLOOR	SEMI GROSS FLOOR AREA
01, 02, 03, 05	195 m <sup>2</sup>
06, 07, 08, 09	
10, 11, 12, 15	NET FLOOR AREA
16, 17, 18, 19	
20, 21, 22, 23	173 m <sup>2</sup>
25, 26, 27, 28	
29, 30, 31, 32	
33, 35, 36, 37	
38, 39, 40, 41	



## SPECIFICATION

**LIFT LOBBY** Imported marble floor in private lift lobby and marble floor in semi-private lift lobby.

**FLOOR**

**Tower I**  
Imported marble floor in living & dining room, tea room, dry kitchen, all bathrooms and powder room, engineered timber floor in all bedrooms and family room. Homogenous tile at wet kitchen and maid's room, composite timber floor at balcony.

**Tower II & III**  
Engineered timber floor in living & dining room, bedroom, family room and study, and imported marble at dry kitchen and local marble at all bathrooms, except 3 bedrooms, master bedroom - imported marble. Homogenous tile at wet kitchen and maid's room, composite timber floor at balcony.

**WALL** Block wall, finished with plaster and paint for internal wall.

**Tower I**

- Bathroom Wall: Block wall in all bathrooms, finished with imported marble up to ceiling.
- Powder room: Block wall, finished with imported marble, and wood panel.
- Kitchen: Block wall, finished with wood panel up to ceiling.

**Tower II & III**

- Bathroom Wall: Block wall in all bathrooms, finished with local marble up to ceiling.
- Powder room: Block wall, finished with local marble.
- Kitchen: Block wall, finished with paint.

**CEILING**

- Bedroom, Living & Dining, Kitchen: Painted gypsum.
- Bathroom and Powder Room: Moisture resistant gypsum board ceiling paint finish.

**DOORS**

- Solid timber door at semiprivate lift lobby entrance.
- Hollow core door within apartment unit.
- Solid timber door at service entrance.
- Aluminum framed glass doors facing balcony.

**WINDOWS**

- Curtain Wall and/ Or aluminum framed windows.
- Aluminum framed window wall at balcony.

**FACILITIES**

- Smart Home, Smart Community & lifestyle.
- Air Conditioning System - VRV System.
- Lightings to all rooms.
- Custom-made walk in closet and Wardrobes for all bedrooms
- Hot water provision to all bathrooms and kitchens.
- Cable TV and Internet Outlets to living area, family room, and all bedrooms.
- For Tower I Water Filtration system under the sink in wet kitchen.
- For Tower II & III Water Filtration system under the sink in dry kitchen.

**SECURITY**

- Video Intercom system.
- 24 Hours security & concierge service, Secure Access System.

**FIRE PROTECTION** Fire Alarm, Sprinkler, Smoke/ Heat Detector, Fire Rated Doors, Fire extinguisher, Pilar Hydrant, Fire command center.

**ELECTRICITY**

**Tower I**

- 4 Bedroom proposed for 100 AMP/ 66,000 VA.
- 3 Bedroom proposed for 80 AMP/ 53,000 VA.

**Tower II & III**

- 3 Bedroom proposed for 63 AMP/ 41,500 VA.
- 2 Bedroom proposed for 50AMP/ 33,000 VA.

## SPECIFICATION

Tower I – 4BR UNIT A &amp; B, 3BR UNIT C &amp; D

## Living / Dining Room

Floor Finishes	IMPORTED MARBLE
----------------	-----------------

## Master Bedroom &amp; Bedrooms

VRV A/C System	DAIKIN, MITSUBISHI OR EQUAL
Wardrobes Master Bedroom	POLIFORM
Wardrobes Bedrooms	BIKA
Floor Finishes	ENGINEERED TIMBER FLOOR

## Kitchen &amp; Appliances

## DRY KITCHEN

Kitchen Cabinet	ARCLINEA
Kitchen Faucet	COOPER GRAHAM
Kitchen Sink	KOHLER
4-Zone Induction Hob	MIELE
Multifunction Oven	MIELE
Steamer	MIELE
Microwave	MIELE
Downdraft Vent System Set	MIELE
Refrigerator	LIEBHERR
Wine Fridge	LIEBHERR
Kitchen Counter	IMPORTED MARBLE
Kitchen Island	IMPORTED MARBLE
Floor Finishes	IMPORTED MARBLE

## WET KITCHEN

Kitchen Cabinet	BIKA
Kitchen Faucet	GROHE
Kitchen Sink	BLANCO
Washer & Dryer Machine	BOSCH
Dishwasher	BOSCH
Gas Hob; 4 Burners	BOSCH
Fridge Freezer	BOSCH
Chimney Hood	BOSCH
Floor Finishes	HOMOGENEOUS TILE

## Master Bathroom

Water Closet + Eco Washer	KOHLER
Lavatory	KOHLER
Lavatory Faucet	COOPER GRAHAM
Paper Holder	COOPER GRAHAM
Towel Bar	COOPER GRAHAM
Shower Set w/ Ceiling Mounted	COOPER GRAHAM
Robe Hook	COOPER GRAHAM
Bathtub	APAISER
Floor & Wall Finishes	IMPORTED MARBLE

## Bathroom

Water Closet + Eco Washer	KOHLER
Lavatory	KOHLER
Lavatory Faucet	COOPER GRAHAM
Paper Holder	COOPER GRAHAM
Towel Bar	COOPER GRAHAM
Shower Set w/ Ceiling Mounted	COOPER GRAHAM
Robe Hook	COOPER GRAHAM
Floor & Wall Finishes	IMPORTED MARBLE

## Powder Room

Water Closet + Eco Washer	KOHLER
Lavatory	KOHLER
Lavatory Faucet	COOPER GRAHAM
Paper Holder	COOPER GRAHAM
Towel Bar	COOPER GRAHAM
Robe Hook	COOPER GRAHAM
Floor & Wall Finishes	IMPORTED MARBLE AND TIMBER WALL PANEL

## SPECIFICATION

## Tower II &amp; III — 3BR UNIT A

## Living / Dining Room

Floor Finishes	ENGINEERED TIMBER FLOOR
----------------	-------------------------

## Master Bedroom &amp; Bedrooms

VRV A/C System	DAIKIN, MITSUBISHI OR EQUAL
Wardrobes Master Bedroom	TOTO
Wardrobes Bedrooms	TOTO
Floor Finishes	ENGINEERED TIMBER FLOOR

## Kitchen &amp; Appliances

## DRY KITCHEN

Kitchen Cabinet	TOTO
Kitchen Faucet	GROHE
Kitchen Sink	BLANCO
4-Zone Induction Hob	GAGGENAU
Telescopic Hood	GAGGENAU
Refrigerator	LIEBHERR
Combi Steam Oven	GAGGENAU
Wine Fridge	LIEBHERR
Kitchen Counter	SOLID SURFACE
Kitchen Island	SOLID SURFACE
Floor Finishes	IMPORTED MARBLE

## WET KITCHEN

Kitchen Cabinet	TOTO
Kitchen Faucet	BLANCO
Kitchen Sink	BLANCO
Washer & Dryer Machine	BOSCH
Dishwasher	BOSCH
Fridge Freezer	BOSCH
Gas Hob; 4 Burners	BOSCH
Chimney Hood	BOSCH
Floor Finishes	HOMOGENEOUS TILE

## Master Bathroom

Water Closet	DURAVIT
Jet Washer	HANSGROHE
Lavatory	DURAVIT
Lavatory Faucet	HANSGROHE
Paper Holder	DURAVIT
Shower Set w/ Ceiling Mounted	HANSGROHE
Bathtub Mixer	HANSGROHE
Bathtub	DURAVIT
Robe Hook	DURAVIT
Floor and Wall Finishes	IMPORTED MARBLE

## Bathroom

Water Closet	DURAVIT
Jet Washer	HANSGROHE
Lavatory	DURAVIT
Lavatory Faucet	HANSGROHE
Paper Holder	DURAVIT
Shower Set w/ Ceiling Mounted	HANSGROHE
Robe Hook	DURAVIT
Floor and Wall Finishes	MARBLE

## Powder Room

Water Closet	DURAVIT
Jet Washer	HANSGROHE
Lavatory	DURAVIT
Lavatory Faucet	HANSGROHE
Paper Holder	DURAVIT
Towel Bar	DURAVIT
Floor and Wall Finishes	MARBLE

## SPECIFICATION

Tower II &amp; III – 2BR UNIT B &amp; C

## Living / Dining Room

Floor Finishes	ENGINEERED TIMBER FLOOR
----------------	-------------------------

## Master Bedroom &amp; Bedrooms

VRV A/C System	DAIKIN, MITSUBISHI OR EQUAL
Wardrobes Master Bedroom	TOTO
Wardrobes Bedrooms	TOTO
Floor Finishes	ENGINEERED TIMBER FLOOR

## Kitchen &amp; Appliances

Kitchen Cabinet	TOTO
Kitchen Faucet	GROHE
Kitchen Sink	BLANCO
4-Zone Induction Hob	GAGGENAU
Telescopic Hood	GAGGENAU
Combi Steam Oven	GAGGENAU
Refrigerator	LIEBHERR
Washer & Dryer Machine	BOSCH
Kitchen Counter	MARBLE
Kitchen Island	MARBLE
Floor Finishes	IMPORTED MARBLE

## Master Bathroom

Water Closet	DURAVIT
Jet Washer	HANSGROHE
Lavatory	DURAVIT
Lavatory Faucet	HANSGROHE
Paper Holder	DURAVIT
Shower Set w/ Ceiling Mounted	HANSGROHE
Bathtub Mixer	HANSGROHE
Bathub	DURAVIT
Robe Hook	DURAVIT
Floor and Wall Finishes	MARBLE

## Bathroom

Water Closet	DURAVIT
Jet Washer	HANSGROHE
Lavatory	DURAVIT
Lavatory Faucet	HANSGROHE
Paper Holder	DURAVIT
Shower Set w/ Ceiling Mounted	HANSGROHE
Robe Hook	DURAVIT
Floor and Wall Finishes	MARBLE

## SPECIFICATION

Tower II &amp; III — 3BR UNIT D &amp; E

## Living / Dining Room

Floor Finishes	ENGINEERED TIMBER FLOOR
----------------	-------------------------

## Master Bedroom &amp; Bedrooms

VRV A/C System	DAIKIN, MITSUBISHI OR EQUAL
Wardrobes Master Bedroom	TOTO
Wardrobes Bedrooms	TOTO
Floor Finishes	ENGINEERED TIMBER FLOOR

## Kitchen &amp; Appliances

DRY KITCHEN	
Kitchen Cabinet	TOTO
Kitchen Faucet	GROHE
Kitchen Sink	BLANCO
4-Zone Induction Hob	GAGGENAU
Telescopic Hood	GAGGENAU
Combi Steam Oven	GAGGENAU
Refrigerator	LIEBHERR
Kitchen Counter	MARBLE
Kitchen Island	MARBLE
Floor Finishes	IMPORTED MARBLE

WET KITCHEN	
Kitchen Cabinet	TOTO
Kitchen Faucet	BLANCO
Kitchen Sink	BLANCO
Washer and Dryer Machine	BOSCH
Gas Hob; 4 burners	BOSCH
Chimney Hood	BOSCH
Floor Finishes	HOMOGENOUS TILE

## Master Bathroom

Water Closet	DURAVIT
Jet Washer	HANSGROHE

## Master Bathroom

Lavatory	DURAVIT
Lavatory Faucet	HANSGROHE
Paper Holder	DURAVIT
Shower Set w/ Ceiling Mounted	HANSGROHE
Bathtub Mixer	HANSGROHE
Bathtub	DURAVIT
Robe Hook	DURAVIT
Floor and Wall Finishes	MARBLE

## Bathroom

Water Closet	DURAVIT
Jet Washer	HANSGROHE
Lavatory	DURAVIT
Lavatory Faucet	HANSGROHE
Paper Holder	DURAVIT
Shower Set w/ Ceiling Mounted	HANSGROHE
Robe Hook	DURAVIT
Floor and Wall Finishes	MARBLE

**DISCLAIMER:** All images shown are for illustrative purposes only. Developer reserves the right to implement necessary change as required to comply with technical and authority requirements.

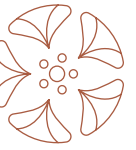


## ACKNOWLEDGEMENT

### *A Global Collaboration of Visionaries*

Savyavasa was conceptualised by a collaboration between two international developers, Hong Kong's Swire Properties and Indonesia's JSI Group.

The partnership brings together Swire Properties' expertise in designing and developing residential properties, and JSI Group's rich real estate experience in Indonesia. From the project's inception, the two partners' common ethos was to place people at the heart of the development.





## JSI GROUP

Building on a heritage as one of the first property developers in Indonesia, the JSI Group has built a reputation of quality and integrity earned over more than 40 years. As a developer of luxury resort hotels, residential, office and retail buildings, the company brings together passion for excellence and spirit of innovation through a process of rigorous discipline.

Its developments balance fine details with quality materials and careful planning as can be witnessed from its distinctive properties such as the Grand Hyatt and Hyatt Regency in Bali, both with lush tropical gardens, the newly opened Andaz Bali, and the Borobudur-inspired Hyatt Regency in Yogyakarta.

Pioneering mixed-use schemes such as Plaza Setiabudi, the company creates standout places where people feel connected. With a strong focus on wellbeing and comfort for greater enjoyment in life, JSI recently set a new benchmark for urban green living in Jakarta with its Setiabudi Skygarden residential high-rise development.



Hyatt Regency Hotel, Yogyakarta



Andaz, Bali



Grand Hyatt Hotel, Bali



Setiabudi Skygarden, Jakarta



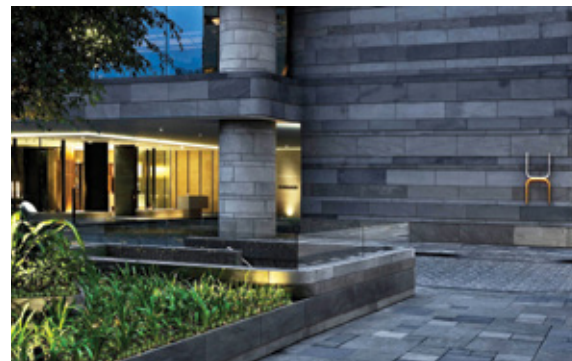
## SWIRE PROPERTIES

For half century, Swire Properties has transformed the urban landscape in Hong Kong, Mainland China and the US with top-notch management, outstanding quality and innovative design collaborations with renowned creative talents.

In Asia, these collaborations include ultra-luxury residential development EDEN in Singapore designed by Thomas Heatherwick of Heatherwick Studio and OPUS HONG KONG designed by Frank Gehry, luxury hotel The Middle House designed by Piero Lissoni, iconic mall Pacific Place modernised by Heatherwick Studio - which was named among “9 of the World’s Most Beautifully Designed Malls” by Architectural Digest. In Miami, Swire Properties launched the landmark mixed-use development in downtown Miami - Brickell City Centre.



EDEN , Singapore



The Upper House, Hong Kong



OPUS HONG KONG



Brickell City Centre, Miami



Pacific Place Mall, Hong Kong

